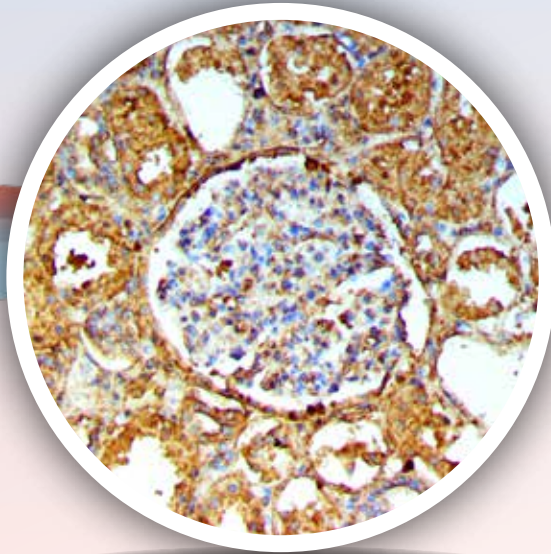
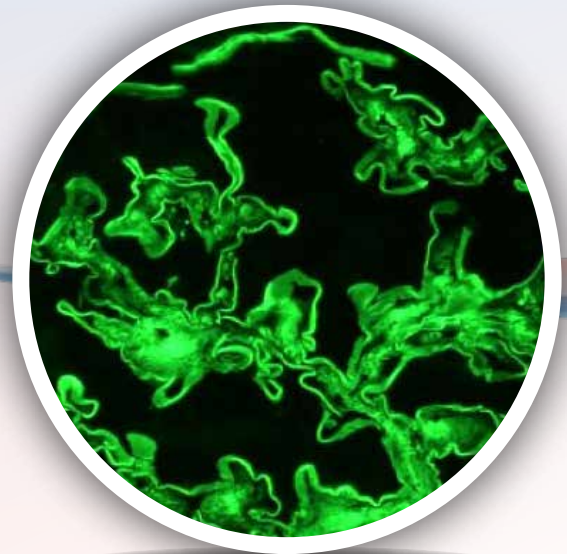


DIRECT AND INDIRECT IMMUNOFLUORESCENCE

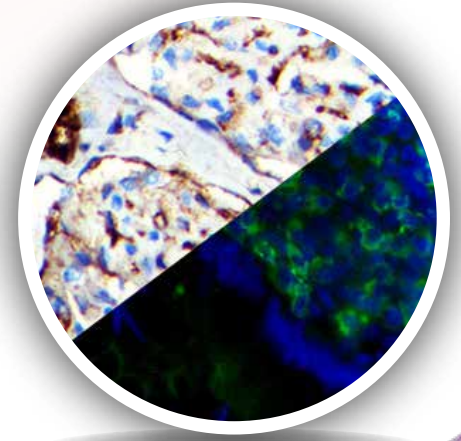
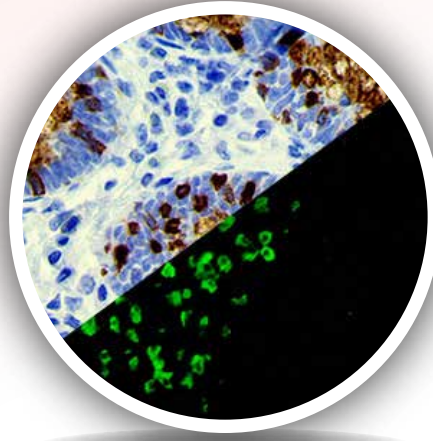
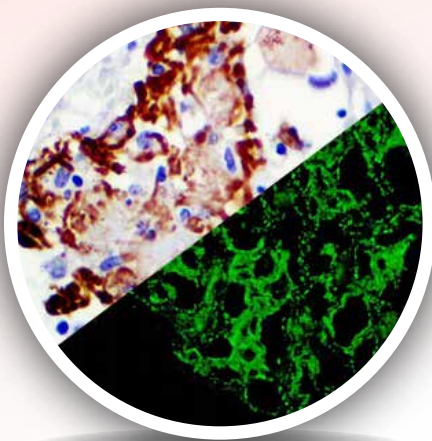
Quality Antibodies | Sensitive Detection | IF and IHC Applications



IHC of Albumin on a FFPE Lupus Erythematosus



IF of Albumin on a Frozen Kidney Tissue



*A selection of antibodies, detection systems for IF and IHC
Autoimmune disease applications.*

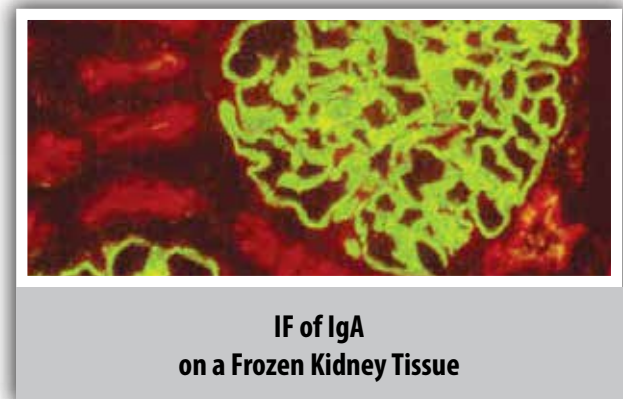
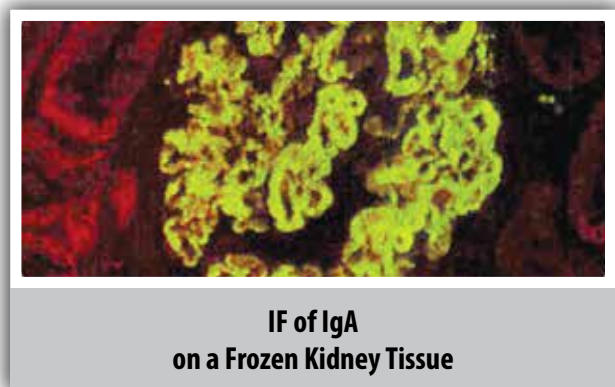
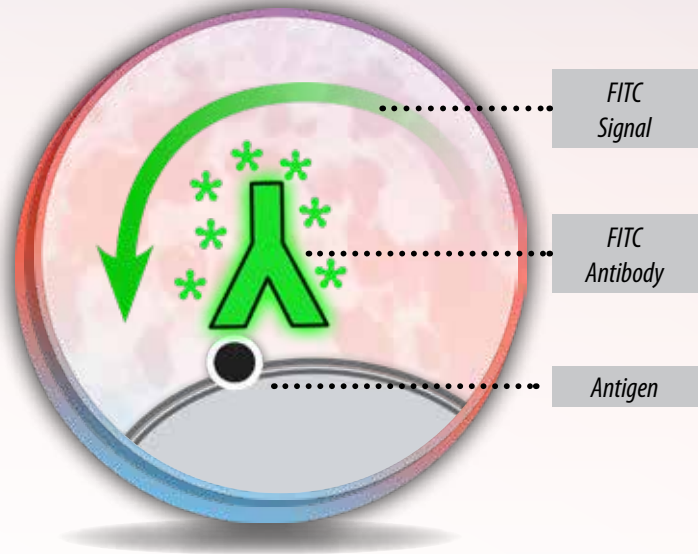
Direct Immunofluorescence

Direct immunofluorescence uses a single, primary antibody, chemically linked to a fluorophore or fluorochrome. The primary antibody recognizes the target molecule (antigen) and binds to a specific region called the epitope. The attached fluorophore can be detected via fluorescent microscopy. Bio SB's Direct immunofluorescence, although somewhat less common, has notable advantages over the indirect procedure. The direct detection of the antigen by a primary antibody directly labeled with a fluorochrome reduces the number of steps in the procedure, saving time and reducing non-specific background signal.

All InDirect Immunofluorescence Antibodies are available in concentrate and convenient Tinto Predilute fomats to meet your laboratory needs.

Tinto Prediluted Antibodies	3 mL Tinto Predilute (30 tests)	Concentrated Antibodies	0.5 mL Concentrate
	7 mL Tinto Predilute (70 tests)		1 mL Concentrate
	15 mL Tinto Predilute (150 tests)		

Direct Immunofluorescence Antibodies	
Albumin / FITC, RPab	Polyclonal
C1q / FITC, RPab	Polyclonal
C3c / FITC, RPab	Polyclonal
C4c / FITC, RPab	Polyclonal
Fibrinogen / FITC, RPab	Polyclonal
IgA / FITC, RPab	Polyclonal
IgD / FITC, RPab	Polyclonal
IgE / FITC, RPab	Polyclonal
IgG / FITC, RPab	Polyclonal
IgM / FITC, RPab	Polyclonal
Kappa / FITC, RPab	Polyclonal
Lambda / FITC, RPab	Polyclonal



Bio SB's high affinity, high sensitivity InDirect Immunofluorescence antibodies work with both our AmpliDetector Plus InDirect FITC Detection system or our PolyDetector micropolymer IHC detection systems. This allows for greater flexibility without sacrificing price or staining quality.

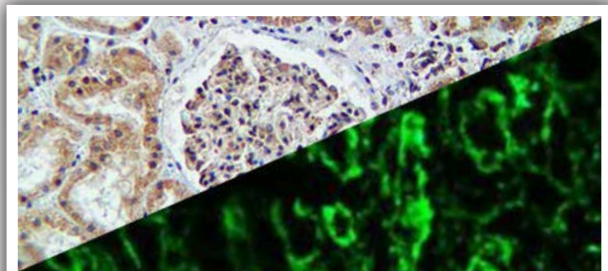
All InDirect Immunofluorescence Antibodies are available in concentrate and convenient Tinto Predilute fomats to meet your laboratory needs.

Tinto Prediluted Antibodies
 3 mL Tinto Predilute (30 tests)
 7 mL Tinto Predilute (70 tests)
 15 mL Tinto Predilute (150 tests)

Concentrated Antibodies
 0.1 mL Concentrate
 0.5 mL Concentrate
 1 mL Concentrate

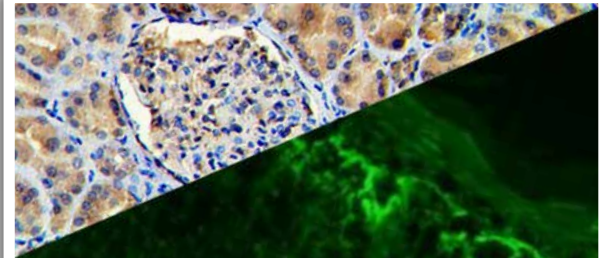
InDirect Immunofluorescence Antibodies	
Albumin, RPab	Polyclonal
Amyloid A, RMab	EP335
C1q, RPab	Polyclonal
C3c, RPab	Polyclonal
C3d, RPab	Polyclonal
C4c, RPab	Polyclonal
C4d, RMab	EP272
Collagen IV, RMab	RBT-COL4
Collagen IV, MMab	CIV22
Cytokeratin 5/6, RMab	EP24 & EP67
Cytomegalovirus, MMab	8B1.2, 1G5.2 & 2D4.2
Fibrinogen, RPab	Polyclonal
IgA, MMab	BSB-39
IgA, RPab	Polyclonal
IgD, RMab	EP173
IgD, RPab	Polyclonal

InDirect Immunofluorescence Antibodies	
IgE, RPab	Polyclonal
IgG, MMab	BSB-40
IgG, RPab	Polyclonal
IgG4, MMab	BSB-96
IgG4, RMab	EP138
IgM, RPab	Polyclonal
IgM, MMab	BSB-41
Kappa, RPab	Polyclonal
Kappa, MMab	BSB-58
Lambda, MMab	BSB-16
Lambda, RPab	Polyclonal
p40, RMab	ZR8
p63, MMab	4A4
p63, RMab	EP174
PLA2R1, MMab	BSB-129
SV40, MMab	pab101



C1q

**IHC on a FFPE Lupus Erythmatosus Tissue
 IF on a Frozen Lupus Erythmatosus Tissue**



Fibrinogen

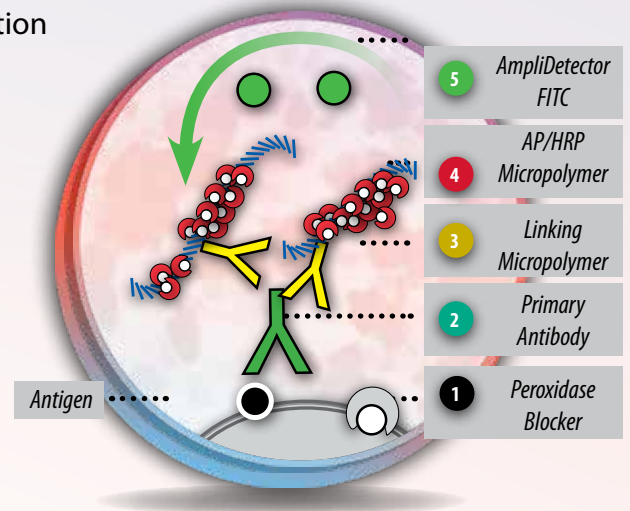
**IHC on a FFPE Kidney Tissue
 IF on a Frozen Lichen Planus Tissue**

Bio SB's highly sensitive Immunofluorescence detection systems for the detection of IVD antibodies related to autoimmune conditions. Our innovative IF detection systems and high affinity antibodies, have opened the doors for a faster and accurate Immunofluorescence and Immunohistochemistry applicable to Autoimmune Disease like Nephropathies and Lupus.

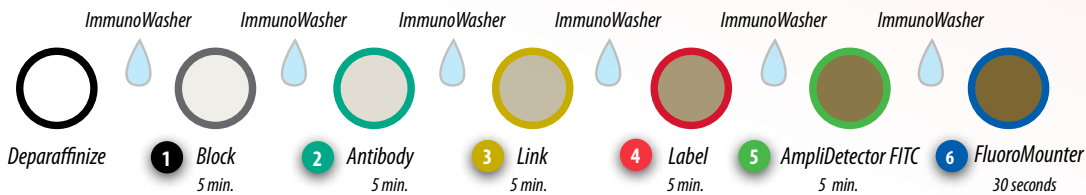
These detection systems are intended for use in Immunofluorescence (IF) applications of formalin-fixed paraffin-embedded tissues (FFPE), frozen tissue sections and cell preparations.

InDirect IF Overview using the AmpliDetector Plus FITC

- Non-Biotin, Fab Micropolymer HRP Amplification detection technology.
- Fab Micropolymer HRP Amplification detection technology allows for better cell penetration to deliver a highly specific and sensitive signal.
- Ready-to-use, high sensitivity system especially designed for InDirect IF detection of formalin-fixed paraffin-embedded or frozen tissue sections and cell preparations.
- Universal: detects mouse or rabbit monoclonal and polyclonal antibodies.
- For in vitro diagnostic Use. All kits manufactured according to US FDA and ISO 13485 guidelines.



Recommended Protocol



Presentations & Volumes

Mouse/Rabbit AmpliDetector Plus FITC

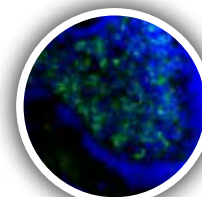
Volume	Catalog #
15 mL	BSB-0359-15
50 mL	BSB-0359-50
100 mL	BSB-0359-100



C4d IF
on a Frozen
Spleen Tissue

Mouse/Rabbit AmpliDetector Plus FITC with FluoroMounter

Volume	Catalog #
15 mL	BSB-0357-15
50 mL	BSB-0357-50
100 mL	BSB-0357-100



Kappa IF
on a Frozen
Colon Tissue

Mouse/Rabbit AmpliDetector Plus FITC with FluoroMounter with DAPI

Volume	Catalog #
15 mL	BSB-0358-15
50 mL	BSB-0358-50
100 mL	BSB-0358-100

Bio SB Inc.

5385 Hollister Ave., Building 8, #108, Santa Barbara, CA 93111, USA
Tel (USA): 1-800-561-1145 | Tel (Int): +1-805-692-2768 | Fax: 805-692-2769
E-mail: sales@biosb.com | Website: www.biosb.com