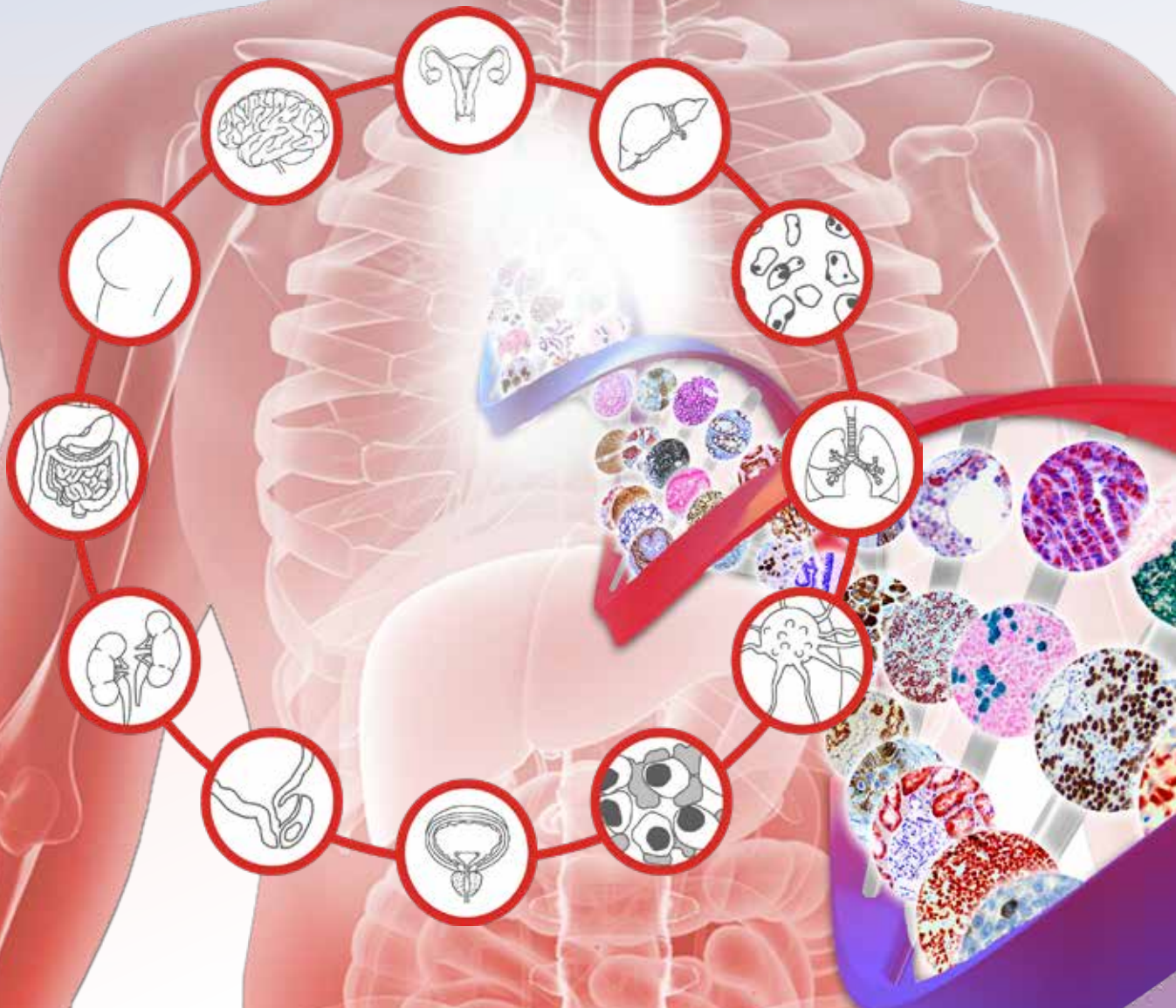


ANTIBODIES BY APPLICATION

Higher Affinity | Higher Sensitivity | Higher Specificity



A selection of over 450 rabbit and mouse monoclonal antibodies.

For use in clinical and research applications.

Breast Cancer Antibodies

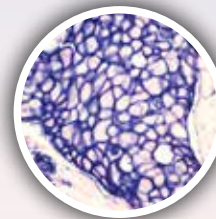
Actin, Smooth Muscle, MMab	BSB-15
Annexin VII, RMab	EP367
ARID1A, RMab	EP303
ATM, RMab	EP327
Aurora B, RMab	RM278
Bax, RMab	E63
BCA-225, MMab	Cu-18
Bcl-x, RMab	EP94
Beta-Catenin	14
CA 15-3, MMab	DF3
CA-125, RMab	EP48
Caldesmon, MMab	BSB-19
Calponin, MMab	BSB-20
CD142 / TF, MMab	BSB-143
CD146 / MUC18 / Mel-CAM, MMab	BSB-122
CDK2, RMab	RBT-CDK2
Claudin-1, RPab	Polyclonal
Claudin-7, RMab	EP399
Collagen IV, RMab	RBT-COL4
CXCL12 / SDF-1, MMab	BSB-165
CXCR4 / CD184 / Fusin, RMab	EP394
Cytokeratin 14, RMab	LL002
Cytokeratin 35BH11, MMab	35betaH11
Cytokeratin 8, RMab	EP17
Cytokeratin LMW/AE1, MMab	AE1
E-Cadherin, RMab	EP6
EGFR Phospho, RMab	EP11
EMA, MMab	E29
Estrogen Receptor, MMab	BSB-1
Estrogen Receptor, RMab	RBT11
Estrogen Receptor, RMab	RM292
Estrogen Receptor Alpha, RMab	EP1
FOXA1/HNF-3A, RPab	Polyclonal
GAB1 / GRB2-associated binding protein 1, MMab	BSB-155
GATA 3, MMab	L50-823
GATA 3, RMab	EP368
GCDFP-15, MMab	23A3
HER-2 neu-EP3, RMab	EP3
HER-2 neu, MMab	BSB-3

Breast Cancer Antibodies

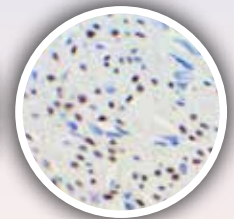
HER-2 neu-RBT HER2, RMab	RBT-HER2
HER-2 neu Phospho, RMab	EP123
HER-3, RMab	RBT-HER3
HLA-DR Alpha Chain, RMab	EP96
Ki-67, RMab	EP5
Ki-67, RMab	RM360
Laminin-R / RPSA, MMab	BSB-144
Mammaglobin, RMab	EP249
Maspin, MMab	BSB-92
MCM3, RMab	EP202
MDR-1, MMab	JSB-1
MDR-1, RMab	EP271
MGMT / AGAT, RMab	EP337
MUC1, RMab	EP85
Myosin Smooth Muscle Heavy Chain, MMab	BSB-17
Nestin, RMab	EP287
NGFR, MMab	BSB-18
NKX3.1, RMab	RM430
P120 Catenin, RMab	EP66
p27, MMab	SX53G8
p53, MMab	DO7
p63, RMab	EP174
p63, MMab	4A4
p120, RMab	EP66
PELP1, RMab	RBT-PELP1
PRAME, RMab	RBT-PRAME
Progesterone Receptor, RMab	EP2
Progesterone Receptor, MMab	BSB2

Breast Cancer Antibodies

Progesterone Receptor RBT22, RMab	RBT22
PTEN, RMab	RM265
PTEN, RMab	RBT-PTEN
TAG-72, MMab	BSB-21
TDP-43 / TARDBP, MMab	BSB-166
Topoisomerase II alpha, RMab	RBT-Topo 2a



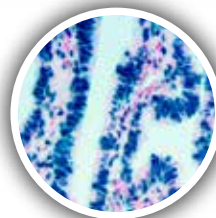
HER-2



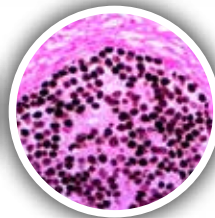
Progesterone Receptor

Carcinoma of Unknown Primary Site

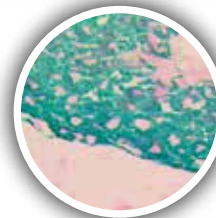
Cytokeratin 7, RMab	RM284
Cytokeratin 20, MMab	Ks20.8
Cytokeratin Cocktail, AE1 & AE3, MMab	AE1&AE3
Cytokeratin MNF116, MMab	MNF116
Cytokeratin Oscar, MMab	OSCAR
GCDFP-15, RMab	EP95
Napsin A, RMab	EP205
S100 Beta, RMab	EP32



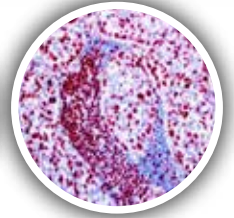
Estrogen Receptor



GATA-3



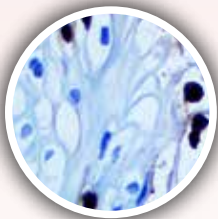
CK MNF116



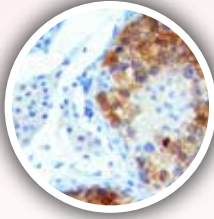
Ki-67

Cervical Cancer Antibodies

Cyclin B1, RMab	RBT-B1
Cyclin B1, RMab	RM281
Cyclin E1, RMab	EP126
Cytokeratin 17, MMab	BSB-33
Cytokeratin 17, RMab	EP98
FGFR-3, MMab	BSB-150
FOXL2, RPab	Polyclonal
HIF-1a, RMab	EP118
HPV, MMab	BSB-66
HPV16, MMab	CAMVIR-1
HSP-27, MMab	G3.1
HSP70, RMab	RM432
MCM2, RMab	RBT-MCM2
MCM5, RMab	RBT-MCM5
p14 ARF/CDKN2A, RMab	RBT-p14
p16, MMab	16P04,JC2
p16, RMab	RBT-p16
p16, RMab	RM267
Stathmin, RMab	EP247
Topoisomerase IIa, RMab	RBT-Topo2a



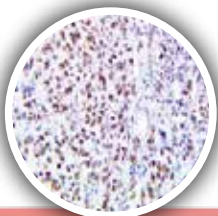
HPV



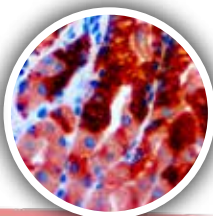
p16

Endometrial Cancer

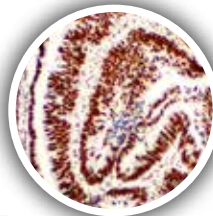
bcl-2, RMab	EP36
hPL, RPab	Polyclonal
Inhibin Alpha, MMab	R1
Inhibin Alpha, RMab	EP378
LIN28, RMab	EP150
p21, MMab	DCS-60.2
PELP1, RMab	RBT-PELP1
Retinoblastoma, MMab	1F8



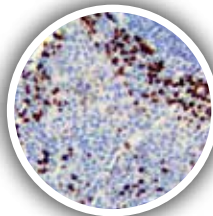
PELP1



MUC5AC



MSH2



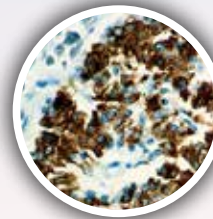
PMS2

Colon & G.I. Antibodies

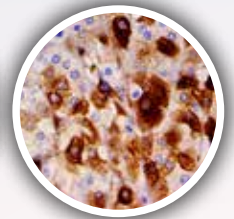
ATM, RMab	EP327
Beta-Catenin, RMab	RM276
BRAF V600E, RMab	RM8
CA 19-9, MMab	121SLE
Cadherin 17/ Li-Cadherin, RMab	EP86
CD44, MMab	BSB-12
CD45RA, MMab	4KB5
CD73 / NT5E, RMab	RM431
CDX2, RMab	EP25
CEA, MMab	BSB-13
Claudin-1, RPab	Rabbit Polyclonal
COX-2, RMab	RBT-COX2
COX-2, RMab	EP293
Cytokeratin 7 & CDX2, RMab	EP16 & EP25
Cytokeratin 8 & 18, RMab	B22.1/B23.1
Cytokeratin 8 & 18, RMab	EP17/EP30
Cytokeratin 18, RMab	EP30
Cytokeratin 19, MMab	BSB-34
Cytokeratin 20, RMab	EP23
Cytokeratin LMW CAM5.2, MMab	CAM5.2
Gastrin, RPab	Polyclonal
ICOS / CD278, RMab	RM417
IgG4, MMab	BSB-96
Lamin-B1, RMab	RBT-LMNB1
MLH1, MMab	G168-728
MMP-9, RMab	EP127
MSH2, MMab	BSB-147
MSH2, MMab	G219-1129
MSH2, RMab	RBT-MSH2
MSH6, MMab	44
MSH6, RMab	EP49
MUC1, MMab	BSB-44
MUC2, MMab	BSB-45
MUC2, RMab	EP187
MUC5AC, MMab	CLH2
MUC6, MMab	CLH5

Colon & G.I. Antibodies

NPM1/B23, MMab	BSB-124
p14 ARF/CDKN2A, RMab	RBT-p14
PMS2, MMab	BSB-130
PMS2, RMab	EP51
SATB2, RMab	EP281
SOX-9, RMab	EP317
TIM-3 / HAVCR2 / CD366, MMab	BSB-163
Villin, MMab	CWWB1
Villin, RMab	EP163



Insulin



Osteonectin /
SPARC

Gall Bladder & Pancreatic Cancer Antibodies

Collagen IV, RMab	RBT-COL4
Collagen IV, MMab	CIV22
Glucagon, RMab	EP74
IgG4, RMab	EP138
IMP-3/1GF2BP3, RMab	EP286
Insulin, MMab	BSB-42
Insulin, RMab	EP125
Islet-1/ISL1, RMab	EP283
MUC4, MMab	8G7
MUC4, RMab	EP256
Osteonectin/SPARC, MMab	BSB-93
PAX-6, RMab	EP341
PDX1, RMab	EP139
S100A8, RMab	EP90
S100P, RMab	EP186
SMAD4/DPC4, MMab	BSB-63
SMAD4/DPC4, RMab	RBT-SMAD4
Somatostatin, RPab	Polyclonal
Somatostatin, RMab	EP130

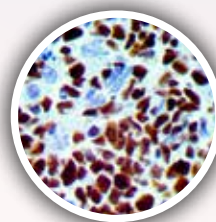
Germ Cell Tumor Antibodies	
Alpha-Fetoprotein, MMab	BSB-23
LIN28, RMab	EP150
Nanog, RMab	EP225
p57, MMab	Kp10
PLAP, MMab	BSB-47
SALL4, RMab	EP299
SF-1 / Steroidogenic Factor 1, MMab	BSB-149
SOX-2, RMab	EP103

GIST Antibodies	
CD117, RMab	EP10
CD117, RMab	RM359
DOG-1, RMab	RBT-DOG1
DOG-1, RMab	EP332

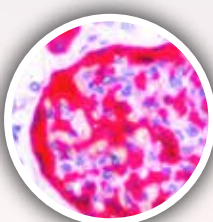
Hematopoietic Antibodies	
CD41/Integrin alpha IIB, RMab	EP178
Clusterin/Apoloprotein J, RMab	EP181
Spectrin, RMab	EP251
Tryptase, MMab	G3
Tryptase, RMab	EP259

Immunotherapy Antibodies	
B7H3 / CD276, RMab	RBT-B7H3
CTLA-4 / CD152, MMab	BSB-88
CTLA-4 / CD152, RMab	RBT-CTLA4
FOXP3, RPab	Polyclonal
ICOS / CD178, RMab	RM417
IFN-a, MMab	BSB-158
IFN-y, MMab	BSB-161
LAG-3/CD223, RMAB	EP294
OX-40/CD134, MMab	BSB-90
PD-1/CD279, MMab	NAT-105
PD-1/CD279, RMab	EP239
PD-L1/CD274, RMab	RBT-PDL1
PD-L1/CD274, RMab	28-8
TIGIT, MMab	BSB-152
TIM-3 / HAVCR2 / CD366, MMab	BSB-163

Hodgkin's & NHB Lymphoma Antibodies	
bcl-6, MMab	BSB-26
bcl-6, RMab	EP278
bcl-6, RMab	RBT-bcl6
BOB.1, RMab	RBT-BOB1
CD3, RMab	RBT-CD3
CD10, RMab	EP195
CD15, MMab	BSB-119
CD15, RMab	EP273
CD19, MMab	BSB-97
CD20, MMab	L26
CD23, MMab	1B12
CD23, RMab	EP75
CD30, MMab	Ber-H2

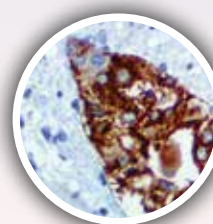


bcl-6

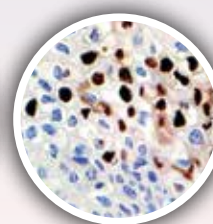


CD10

Hodgkin's & NHB Lymphoma Antibodies	
CD57, MMab	BSB-10
CD137 / TNFRSF9, MMab	BSB-159
Fascin, MMab	BSB-36
FOXO1, RMab	EP290
FOXP3, RMab	EP340
Granzyme B, RPab	Polyclonal
MUM-1, RMab	EP190
OCT-2, RMab	EP115
PAX-5, RMab	RBT-PAX5
PD-L1/CD274, RMab	28-8
TIA-1, RMab	RBT-TIA1



Varicella Zoster Virus



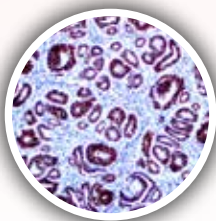
HPV

Infectious Disease Antibodies	
ACE2, MMab	BSB-135
Adenovirus, MMab	20/11 & 2/6
CD147, MMab	BSB-137
Cytomegalovirus, MMab	8B1.2, 1G5.2 & 2D4.2
Epstein Barr Virus, LMP-1, MMab	CS1-4
Factor H / Complement Factor H, MMab	BSB-164
Helicobacter pylori, MMab	BSB-37
Helicobacter Pylori, RPab	Polyclonal
Helicobacter pylori, RMab	EP279
Hepatitis B Virus Core Antigen, RPab	Polyclonal
Hepatitis B Virus Surface Antigen, MMab	A10F1
Herpes Simplex Virus 1, RPab	Polyclonal
Herpes Simplex Virus 2, RPab	Polyclonal
Herpes Simplex Virus I, MMab	10A3
Herpes Simplex Virus I & II, MMab	10A3/BSB-116

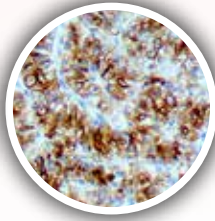
Infectious Disease Antibodies	
Herpes Simplex Virus I & II, RPab	Polyclonal
Herpes Simplex Virus II, MMab	BSB-116
HHV-8, MMab	13B10
HHV-8, RMab	RBT-HHV8
HPV, MMab	BSB-66
HPV16, MMab	CAMVIR-1
IFN-a, MMab	BSB-158
IFN-y, MMab	BSB-161
Mycobacterium Tuberculosis	Polyclonal
Parvovirus, MMab	R92F6
Pneumocystis Jirovecii, MMab	3F6
SARS-CoV-2, MMab	BSB-134
SV40, MMab	Pab101
TMPRSS2, MMab	BSB-136
Toxoplasma gondii, RPab	Polyclonal
Treponema Pallidum, RPab	Polyclonal
Varicella Zoster Virus, MMab	SG1-1, SG1-SG4, NCP-1 & IE-62

Kidney Cancer & Urothelial Antibodies

Amyloid A, RMab	EP335
Cadherin-6, RMab	EP217
Carbonic Anhydrase 9, RMab	EP161
CD147, MMab	BSB-137
FGFR-3, MMab	BSB-150
Ksp-Cadherin	4H6/F9
Parvalbumin, RMab	EP300
PAX-2, RMab	EP235
PAX-8, RMab	ZR-1
PLA2R1, MMab	BSB-129
Renal Cell Carcinoma, MMab	PN-15
S100A1, RMab	EP184
S100A6, RMab	EP313
SDHB, MMab	BSB-131
Smoothelin, MMab	R4A
STAR, RMab	EP226
Survivin, RMab	EP119
TFE3, RMab	EP285
Thrombomodulin, RMab	EP175
Uroplakin III, RPab	Polyclonal
Uroplakin III, RMab	EP321
WT1, MMab	6F-H2



PAX-2



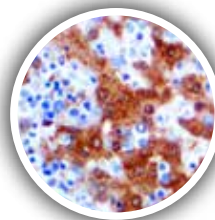
Renal Cell Carcinoma

Liver Cancer Antibodies

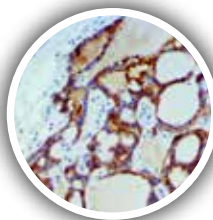
Alpha-Fetoprotein, RMab	EP209
Arginase-1, RMab	EP261
CEA, RPab	Polyclonal
Glutamine Synthase, MMab	GS-6
Glypican-3, MMab	1G12
HEG1, MMab	SKM9-2
Hepatocyte Specific Antigen / Hep Par 1, MMab	OCH1E5
Prealbumin / Transthyretin, MMab	BSB-125

Leukemia/Histocytic Antibodies

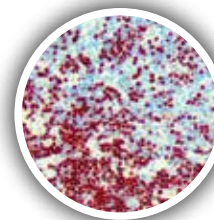
A-1-Antichymotrypsin, RMab	EP384
Alpha1-Antichymotrypsin, RPab	Polyclonal
Alpha-1-Antitrypsin, RPab	Polyclonal
Annexin A1, MMab	BSB-95
c-Myc, MMab	9E10
c-Myc, RMab	EP121
Caspase-3, RMab	RM250
CD1a, RMab	EP80
CD5, RMab	RM314
CD7, MMab	LP15
CD8, RMab	EP334
CD11b, RMab	EP45
CD11c, RMab	EP157
CD13, MMab	38C12
CD14, MMab	7
CD16, RMab	EP364
CD19, RMab	EP169
CD25, MMab	4C9
CD33, RMab	RBT-CD33
CD34, MMab	QEnd/10
CD34, RMab	EP88
CD38, MMab	SPC32
CD42b, RMab	EP409
CD61, MMab	2f2
CD61, RMab	EP65
CD68, MMab	BSB-8
CD68, MMab	KP1
CD71, MMab	10F11
CD99, MMab	BSB-9
CD103/ITGAE, RMab	EP206
CD163, MMab	10D6
Factor XIIIa, RMab	EP292
Glycophorin A, MMab	GA-R2
Hemaglobin A, RMab	EP124



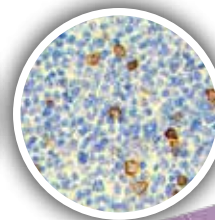
Arginase-1



Glypican-3



LEF-1



TCR Delta

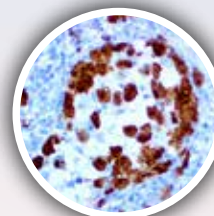
Leukemia/Histocytic Antibodies

HLA-DRB1 beta, RMab	EP191
IDH R132H, RMab	RBT-IDH1
IgA, MMab	BSB-39
IgG, MMab	BSB-40
IgM, MMab	BSB-41
Langerin, MMab	12D6
Langerin/CD207, RMab	EP349
LEF-1, RMab	EP310
Lysozyme, MMab	Polyclonal
Lysozyme, RMab	EP134
Macrophage/HAM-56, MMab	HAM-56
MNDA, MMab	BSB-157
Musashi 2, RMab	RM422
Myeloperoxidase, RPab	Polyclonal
Myeloperoxidase, RMab	EP151
NPM1/B23, MMab	BSB-124
Neutrophil Elastase, RMab	EP223
NPM1 / B23, MMab	BSB-124
PDGFR-B, RMab	RBT-PDGFRB
PU.1, RMab	EP18
Spectrin, MMab	RBC2/3D5
Spectrin, RMab	EP251
T-Bet/TBX-21, RMab	EP263
TCL-1, RMab	EP105
TCR Alpha, MMab	BSB-126
TCR Beta, MMab	BSB-117
TCR Delta, MMab	BSB-127
TdT, MMab	Polyclonal
TdT, RMab	RBT-TdT
TdT, RMab	EP266
TIA-1, MMab	TIA-1
TIM-3 / HAVCR2 / CD366, MMab	BSB-163
TRAcP, MMab	9C5
Zap-70, MMab	2F3.2

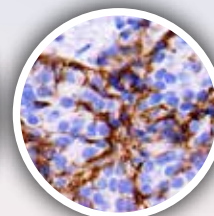
Lung Cancer Antibodies	
ALK, RMab	EP302
BAP1, MMab	BSB-109
BG8 Lewis Y, MMab	F3
BRG-1 / SMARCA4, MMab	BSB-154
c-Met / HGFR, RMab	EP1454Y
CD142 / TF / Coagulation Factor III . Thromboplastin, MMab	BSB-143
CD73 / NT5E, RMab	RM431
CXCL12 / SDF-1, MMab	BSB-165
CXCR5 / CD185, RPab	Polyclonal
Cytokeratin 6, RMab	EP67
Cytokeratin 7, MMab	OV-TL 12/30
Cytokeratin LMW/AE1, MMab	AE1
Desmoglein-3, MMab	BSB-61

Lung Cancer Antibodies	
Desmoglein-3, RMab	EP306
EGFR, MMab	31G7
ERCC1, RMab	EP219
GLUT-1, RMab	EP141
INSM1, MMab	BSB-123
INSM1, RMab	RBT-INSM1
Lamin-B1, RMab	RBT-LMNB1
Musashi 2, RMab	RM422
Napsin A, MMab	BSB-112
pan-TRK, RMab	RM423
pan-TRK, RMab	RBT-TRK
PGP 9.5, MMab	BSB-46
Pygopus 2 / Pygo 2, MMab	BSB-156
ROS-1, RMab	EP282
S100A9, RMab	EP185

Lung Cancer Antibodies	
Somatostaton Receptor 2, RMab	EP149
SOX-2, RMab	EP103
SOX-2, RMab	RM427
Surfactant Protein D / SP-D, MMab	BSB-162
Thymidylate Synthase / TS, MMab	BSB-160
TTF-1, MMab	8G7G3/1
YAP1, MMab	BSB-146



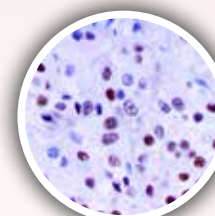
ALK



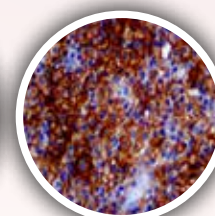
Desmoglein

Lymphoma Antibodies	
ALK-1, RMab	RBT-ALK1
bcl-2, MMab	BSB-5
bcl-6, RMab	RBT-bcl6
bcl-10, MMab	BSB-22
c-Myc, RMab	EP121
CD2, MMab	AB75
CD3 Epsilon, RMab	RBT-CD3e
CD4, RMab	RBT-CD4
CD5, RMab	RBT-CD5
CD5, RMab	RM324
CD6, MMab	BSB-54
CD7, RMab	EP132
CD8, MMab	C8/144B
CD10, MMab	56C6
CD14, RMab	EP128
CD21, RMab	EP64
CD25, RMab	RBT-CD25
CD35, MMab	BSB-132
CD38, RMab	EP135
CD43, MMab	MT1
CD45R, MMab	MB1
CD45RO, MMab	UCHL-1
CD74, MMab	N2
CD75, MMab	LN1
CD79a, MMab	JCB117
CD123 / IL-3Ra, MMab	BSB-59
CD137 / TNFSFR9, MMab	BSB-159
CD138, MMab	B-A38

Lymphoma Antibodies	
CD138, RMab	EP201
CXCR5 / CD185, RPab	Polyclonal
Cyclin D1, RMab	RBT-14
Cyclin D1, Rmab	RM241
E2F4, RMab	EP252
Follicular Dendritic Cell, MMab	CNA.42
FOXP1, RMab	EP137
Granzyme B, RMab	EP230
hGAL / GCET, RMab	EP316
Histone H3 Phospho, RPab	Polyclonal
Histone H3 Phospho, RMab	EP233
IgD, MMab	Polyclonal
IgD, RMab	EP173
Kappa Light Chains	BSB-58
Lambda, MMab	BSB-16
LMO2, RMab	RBT-LMO2
MNDA, MMab	BSB-157
NPM1 / B23, MMab	BSB-124
PD-1 / CD279, MMab	NAT-105
PD-1/ CD279, RMab	EP239
PD-L1 / CD271, RMab	28-8
PU.1, RMab	EP18
SOX-11, MMab	CL0142
SOX-11, MMab	BSB-167
TCR Alpha, MMab	BSB-126
TCR Delta, MMab	BSB-127



FOXO1

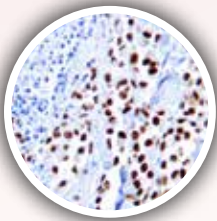


PD-L1

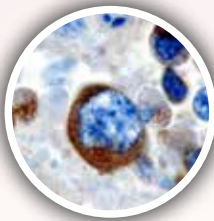
Melanoma & Skin Cancer Antibodies	
Adipophilin/ADRP, MMab	BSB-91
CD63, MMab	NKi/C3
CD146/MUC18/Mel-CAM, MMab	BSB-122
Cytokeratin 5 & 6, RMab	EP24 & EP67
Cytokeratin 10, RMab	EP97
Cytokeratin 13, RMab	EP69
Cytokeratin 14, RMab	RM328
Cytokeratin 15, RMab	EP14
Cytokeratin LMW / AE1, MMab	AE1
Cytokeratin MNF116, MMab	MNF116
HSP70, RMab	RM432
MART-1 / Melan-A, M2-7C10, MMab	M2-7C10
MART-1 / Melan-A, A103, MMab	A103

Melanoma & Skin Cancer Antibodies

Melanoma / KBA.62, MMab	KBA6.2
Melanoma / PNL2, MMab	PNL2
Melanoma Cocktail, MMab	HMB-45, A103 & BSB-6
Melanosome, MMab	HMB-45
MiTF, MMab	C5/D5
MLH1, MMab	G168-728
MTAP, RMab	RBT-MTAP
NRAS (Q61R), RMab	RBT-NRAS
PMS2, MMab	BSB-130
PRAME, RMab	RBT-PRAME
S-100, MMab	4C4.9
S100B, RMab	EP32
SOX-10, RMab	EP268
SOX-10, MMab	BSB-62
TDP-43 / TARDBP, MMab	BSB-166
TIGIT, MMab	BSB-152
Tyrosinase, MMab	BSB-6



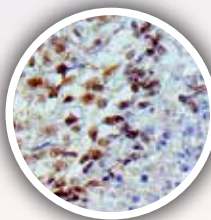
PRAME



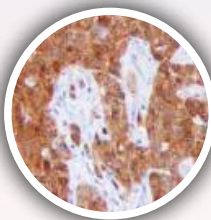
Melanosome

Mesothelioma Antibodies

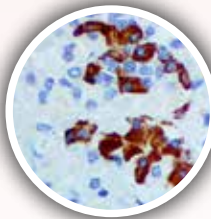
BAP1, MMab	BSB-109
Calretinin, RMab	EP1798
Calretinin, RMab	RM324
Caveolin 1, RMab	EP353
Cytokeratin 5, RMab	EP24
Cytokeratin 5 & 6, MMab	D5/16B4
EpCAM / Epithelial Specific Antigen, MMab	Ber-EP4
EpCAM / Epithelial Specific Antigen, MMab	MOC-31
HEG1, RMab	SKM9-2
Mesothelial Cell, MMab	HBME-1
Mesothelin, RMab	EP140
MTAP, RMab	RBT-MTAP



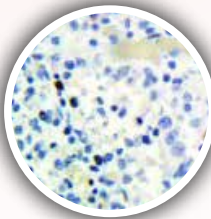
BAP1



MTAP



GH



pan-TRK

Ovarian Cancer Antibodies

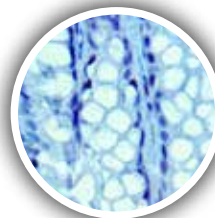
ARID1A, RMab	EP303
CA-125, MMab	OC125
hCG, MMab	BSB-38
HE4, RMab	EP370
hPL, RMab	EP241
LIN28, RMab	EP150
Nanog, RMab	EP225
PAX-8, RMab	EP298
SF-1 / Steroidogenic Factor 1, MMab	BSB-149
STAR, RMab	EP226
Surfactant Protein D / SP-D, MMab	BSB-162

Pituitary Antibodies

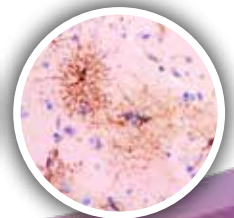
ACTH, MMab	BSB-25
FSH, RMab	EP257
FSH, MMab	BSB-55
GH, MMab	BSB-99
GH, RPab	Polyclonal
HMG2, RMab	EP398
Luteinizing Hormone, MMab	BSB-53
Prolactin, MMab	PRL02
SDHB, MMab	BSB-131
STAR, RMab	EP226
TSH, MMab	BSB-56

Neural & Neuroendocrine Cancer Antibodies

Prolactin, RMab	EP193
Pygopus 2 / Pygo 2, MMab	BSB-156
SDHB, MMab	BSB-131
Somatostatin, MMab	BSB-113
Somatostatin Receptor 2, RMab	EP149
SOX-2, RMab	RM427
Synaptophysin, RPab	Polyclonal
Synaptophysin, RMab	EP158
Tau, MMab	BSB-115
TSH, RMab	EP254



ATRX



GFAP

Neural & Neuroendocrine Cancer Antibodies

Alpha Synuclein, MMab	BSB-114
Amyloid Beta, RMab	RBT-A4
ATRX, MMab	BSB-108
ATRX, RMab	RBT-ATRX
Brachyury, RMab	RBT-TBXT
Calcitonin, RMab	EP92
CD56, MMab	123C3.D5
Chromogranin A	LK2H10
CXCR4 / CD184 / Fusin, RMab	EP394
GFAP, MMab	G-A-5
GFAP, RMab	RM246
GH, RMab	EP267
Glucagon, MMab	BSB-111
IDH1 R132H, MMab	IHC132
IDH1 R132H, RMab	RBT-IDH1
INI-1, RMab	RBT-INI1
INSM1, MMab	BSB-123

Neural & Neuroendocrine Cancer Antibodies

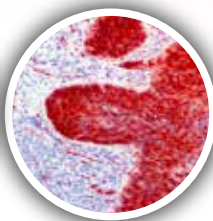
INSM1, RMab	RBT-INSM1
MGMT / AGAT, RMab	EP337
Myelin Basic Protein, RPab	Polyclonal
Myelin Basic Protein, RMab	EP207
NeuN, MMab	A60
NeuN, RMab	RBT-NeuN
Neurofilament, MMab	2F11
Neurofilament, RMab	EP79
NSE, MMab	BSB-94
OLIG2, RMab	EP112
pan-TRK, RMab	RM423
panTRK, RMab	RBT-TRK
PAX-7, RMab	BSB-145
PHOX2B, RMab	EP312
Prealbumin/ Transthyretin, MMab	BSB-125

Prostate Cancer Antibodies

ALDH1A1, RMab	EP168
AMACR / P504S, RMab	13H4
Androgen Receptor	BSB-4
Annexin VII, RMab	EP367
Aurora B, RMab	RM278
Caspase-3, RMab	RM250
Cytokeratin 5 & ERG, RMab	EP24/EP111
Cytokeratin 5, 6 & ERG, RMab	EP24/EP67/EP111
Cytokeratin 5 & 14, RMab	EP24/EP61
Cytokeratin HMW / 34BE12, MMab	34BE12
FOXA1 / HNF-3A, RMab	EP277
NKX3.1, RMab	EP356
NKX3.1, RMab	RM430
p40, RMab	ZR8
p63, RMab	EP174
Prostein / P501S, RMab	EP381
PSA, MMab	BSB-7
PSA, RMab	RBT-PSA
PSAP, MMab	PASE/4LJ
PSAP, RMab	EP53
PSMA, RMab	EP192
PSP94 / MSMB, RMab	EP203



PSA, RMab



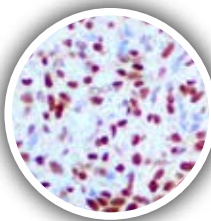
CDK4, RMab

Rejection & Autoimmunity Antibodies

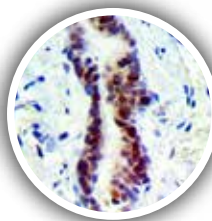
C3d, RPab	Polyclonal
C4d, RMab	EP272
IL-1a, MMab	BSB-138
IL-1b, MMab	BSB-139
IL-6, MMab	BSB-140
iNOS, RMab	RBT-iNOS
Perforin	5B10
PLA2R1	BSB-129
TNFA-IP2, MMab	BSB-141

Sarcoma & Soft Tissue Antibodies

Actin, Muscle Specific, MMab	HHF35
BCOR, MMab	BSB-128
CD13, RMab	EP117
CD35, RMab	EP197
CD99, MMab	BSB-9
CD163, RMab	EP324
CDK4, RMab	EP180
Desmin, MMab	D33
Desmin, RMab	EP15
Fumarate Hydratase, MMab	BSB-151
HHV-8, MMab	13B10
HHV-8, RMab	RBT-HHV8
INI-1, MMab	25
INI-1, RMab	RBT-INI1
MDM2, MMab	BSB-64
MyoD1, RMab	EP212
Myogenin, MMab	F5D
Myogenin, RMab	EP162
Myoglobin, RPab	Polyclonal
Myoglobin, MMab	BSB-104
Myoglobin, RMab	EP87
NKX2.2, RMab	EP336
NUT / NUTM1, RPab	Polyclonal
PAX-7, MMab	BSB-145
STAT6, RMab	EP325
TLE-1, MMab	1F5
TLE-1, MMab	BSB-142
Vimentin, RMab	EP21



STAT6



MDM2

Thyroid & Parathyroid Antibodies

Calcitonin, RPab	Polyclonal
Cytokeratin 19, RMab	RM364
Galectin-3, MMab	9C4
HMGA2, RMab	EP398
panTRK, RMab	RBT-TRK
Parafibromin, MMab	BSB-50
Parathyroid (PTH), MMab	BSB-24
Thyroglobulin, MMab	BSB-49
Thyroglobulin, RMab	EP250
Thyroid Peroxidase, RMab	EP159
Trop-2 / EGP-1, MMab	BSB-148

Undifferentiated Tumor Antibodies

CD45, MMab	2B11 & PD7/26
Cytokeratin AE1/AE3, MMab	AE1 & AE3
PLAP, RMab	EP194
S-100, MMab	4C4.9
SOX-10, MMab	EP298
SOX, RMab	BSB-62
Synaptophysin, RPab	Polyclonal
Vimentin, MMab	V9

Bio SB performs R&D, production, distribution of antibodies and detection systems for immunohistochemistry (IHC), including environmentally friendly ancillaries, unique IVD validated antibodies, detection systems and equipment. Our portfolio includes products for immunohistochemistry (IHC) immunocytochemistry (ICC), Immunofluorescence (IF), chromogenic in situ hybridization (CISH) and fluorescent in situ hybridization (FISH) technologies that meet the highest international standards for applications in molecular pathology, cancer research, microbiology, immunology and genetics. Bio SB manufactures and develops products in accordance with FDA QSR 21 CFR Part 820 cGMP, CE IVD and ISO13485 certifications.

Bio SB Inc.

5385 Hollister Ave., Building 8, #108, Santa Barbara, CA 93111, USA
 Tel (USA): 1-800-561-1145 | Tel (Int): +1-805-692-2768 | Fax: 805-692-2769
 E-mail: sales@biosb.com | Website: www.biosb.com