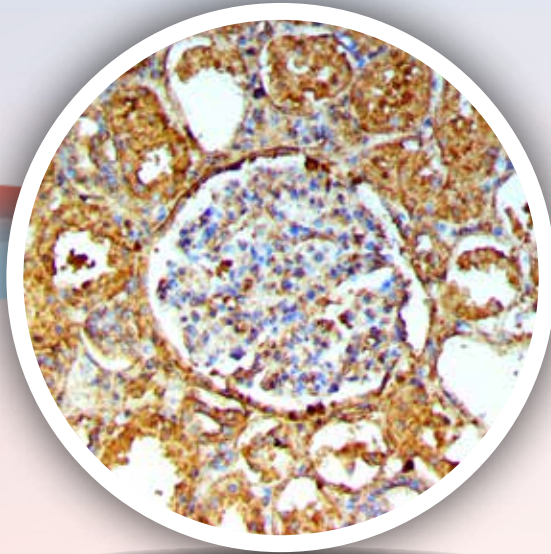


DIRECT AND INDIRECT IMMUNOFLUORESCENCE

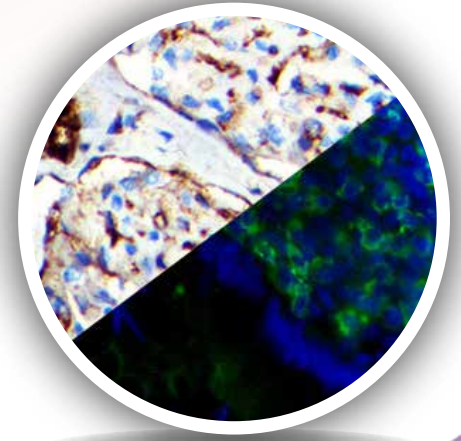
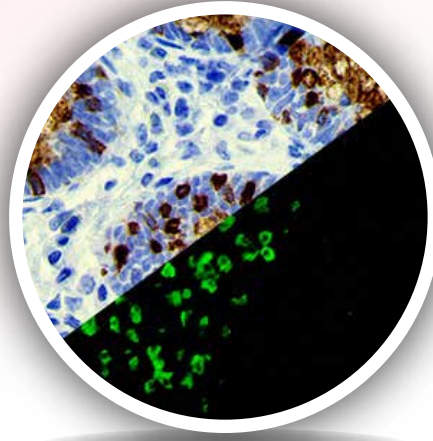
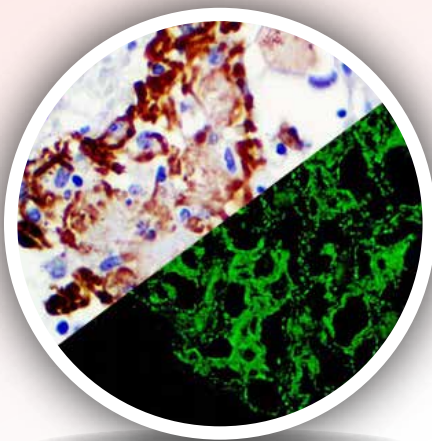
Quality Antibodies | Sensitive Detection | IF and IHC Applications



IHC of Albumin on a FFPE Lupus Erythematosus



IF of Albumin on a Frozen Kidney Tissue



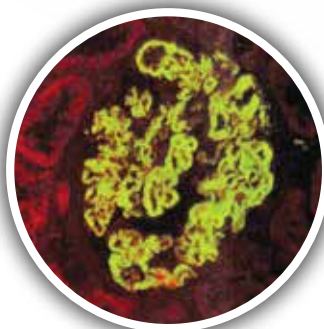
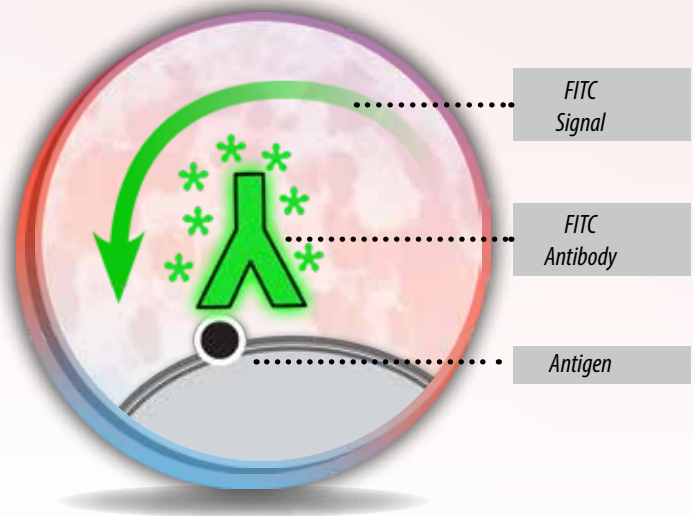
*A selection of antibodies, detection systems for IF and IHC
Autoimmune disease applications.*

Direct immunofluorescence uses a single, primary antibody, chemically linked to a fluorophore or fluorochrome. The primary antibody recognizes the target molecule (antigen) and binds to a specific region called the epitope. The attached fluorophore can be detected via fluorescent microscopy. Bio SB's Direct immunofluorescence, although somewhat less common, has notable advantages over the indirect procedure. The direct detection of the antigen by a primary antibody directly labeled with a fluorochrome reduces the number of steps in the procedure, saving time and reducing non-specific background signal.

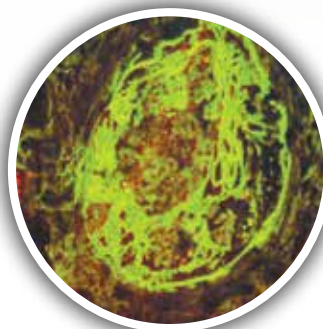
Direct Immunofluorescence Overview

- High affinity purified antibodies conjugated to FITC.
- Highly sensitive and specific.
- Low background.
- Reduction in time compared to InDirect labeling.
- Validated for transplantation and autoimmunity studies.

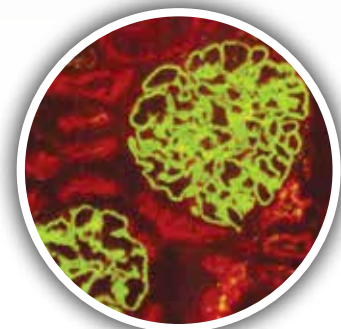
Direct Immunofluorescence Antibodies		
Albumin / FITC	1.0 ml	BSB 3000
C1q / FITC	1.0 ml	BSB 3001
C3c / FITC	1.0 ml	BSB 3002
C4c / FITC	1.0 ml	BSB 3003
Fibrinogen / FITC	1.0 ml	BSB 3004
IgA / FITC	1.0 ml	BSB 3005
IgD / FITC	1.0 ml	BSB 3006
IgG / FITC	1.0 ml	BSB 3007
IgM / FITC	1.0 ml	BSB 3008
Kappa / FITC	1.0 ml	BSB 3009
Lambda / FITC	1.0 ml	BSB 3010
IgE	1.0 ml	BSB 3011



**IF of IgA
on a Frozen Kidney Tissue**



**IF of Fibrinogen
on a Frozen Kidney Tissue**



**IF of IgA
on a Frozen Kidney Tissue**

Antibodies For InDirect Immunofluorescence **Bio SB** BIOSCIENCE FOR THE WORLD

Bio SB's high affinity, high sensitivity InDirect Immunofluorescence antibodies work with both our FluoroDetector InDirect FITC Detection system or our PolyDetector micropolymer IHC detection system. This allows for greater flexibility without sacrificing price or staining quality.

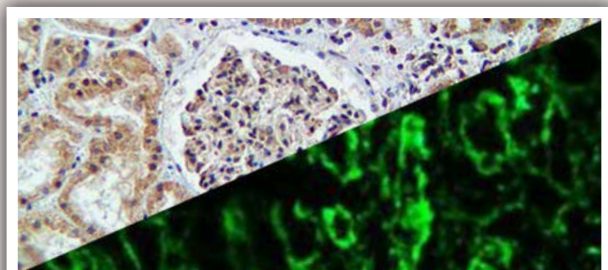
All InDirect Immunofluorescence Antibodies are available in concentrate and convenient Tinto Predilute fomats to meet your laboratory needs.

Tinto Prediluted Antibodies * (For IHC Only)	3 mL Tinto Predilute (30 tests) 7 mL Tinto Predilute (70 tests) 15 mL Tinto Predilute (150 tests)	Concentrated Antibodies	0.1 mL Concentrate 0.5 mL Concentrate 1 mL Concentrate
--	---	--------------------------------	--

Complement
C1q, RPab
C3c, RPab
C3d, RPab
C4c, RPab
C4d, RMab

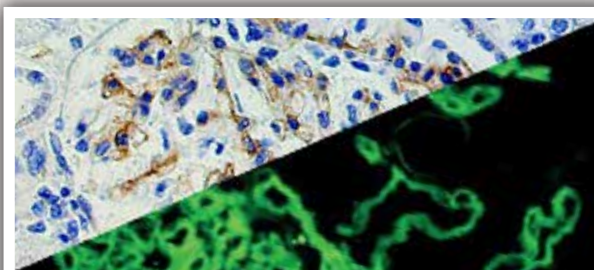
Immunoglobulins
IgA, RPab
IgD, RPab
IgE, RPab
IgG, RPab
IgM, RPab
Kappa, RPab
Lambda, RPab

Serum Proteins
Albumin, RPab
Fibrinogen, RPab



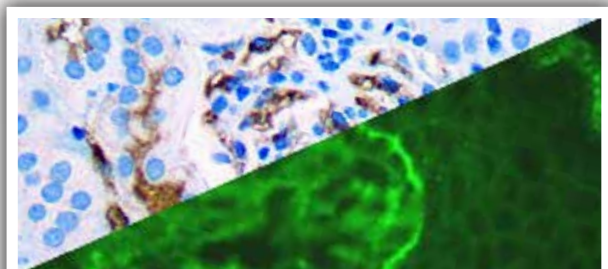
C1q

IHC on a FFPE Lupus Erythmatosus Tissue
IF on a Frozen Lupus Erythmatosus Tissue



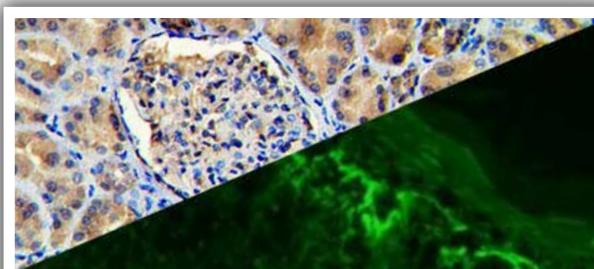
C4d, RMab

IHC on a FFPE Spleen Tissue
IF on a Frozen Kidney Rejection Tissue



IgA

IHC on a FFPE Kidney Tissue
IF on a Frozen Bulluos Dermatosus Tissue



Fibrinogen

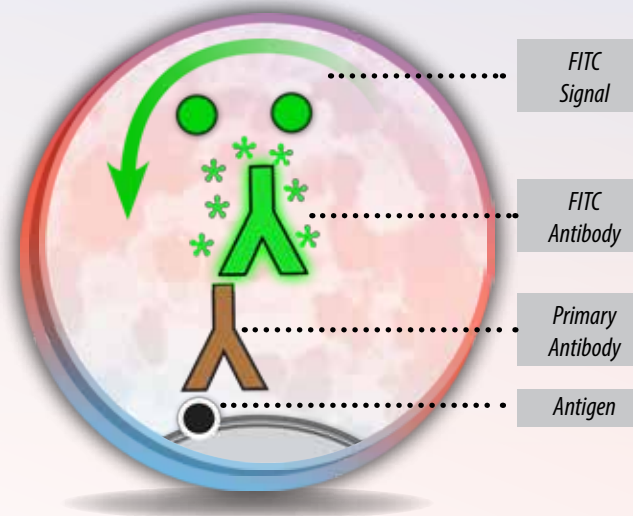
IHC on a FFPE Kidney Tissue
IF on a Frozen Lichen Planus Tissue

Bio SB's highly sensitive Immunofluorescence detection systems for the detection of IVD antibodies related to autoimmune conditions. Our innovative IF detection systems and high affinity antibodies, have opened the doors for a faster and accurate Immunofluorescence and Immunohistochemistry applicable to Autoimmune Disease like Nephropathies and Lupus.

These detection systems are intended for use in Immunofluorescence (IF) applications of formalin-fixed paraffin-embedded tissues (FFPE), frozen tissue sections and cell preparations.

InDirect Immunofluorescence Overview

- Proprietary tandem hyperlabeling technology.
- Ensures consistent and reproducible immunostaining for all types of nuclear, cytoplasmic and membranous antigens, in different types of tissues or cell preparations.
- Highly specific and sensitive signal.
- Ready-to-use, high sensitivity system especially designed for InDirect IF detection on of formalin-fixed paraffin-embedded or frozen tissues.
- Detects rabbit antibodies, both monoclonal and polyclonal.
- For in vitro diagnostic Use. All kits manufactured according to US FDA and ISO 13485 guidelines.



Presentations & Volumes

Rabbit FluoroDetector FITC

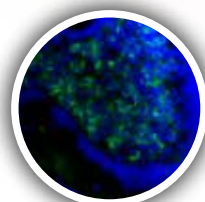
Volume	Catalog #
15 mL	BSB 0321
50 mL	BSB 0322
100 mL	BSB 0323



**C4d IF
on a Frozen
Spleen Tissue**

Rabbit FluoroDetector FITC with FluoroMounter

Volume	Catalog #
15 mL	BSB 0315
50 mL	BSB 0316
100 mL	BSB 0327



**Kappa If
on a Frozen
Colon Tissue**

Rabbit FluoroDetector FITC with FluoroMounter with DAPI

Volume	Catalog #
15 mL	BSB 0318
50 mL	BSB 0319
100 mL	BSB 0320