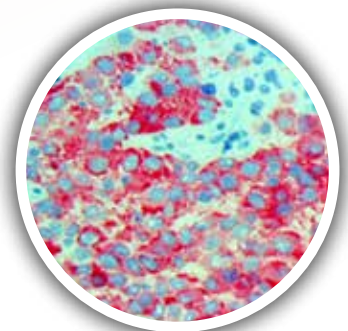
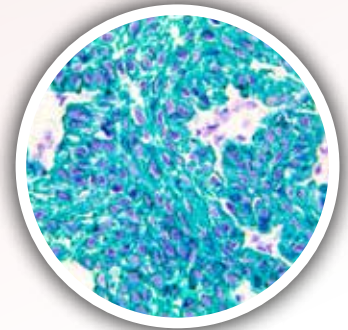
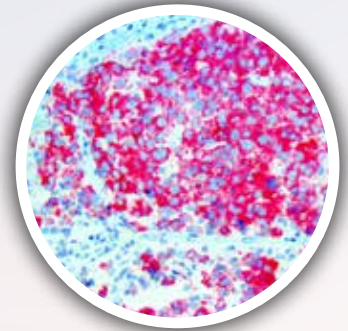
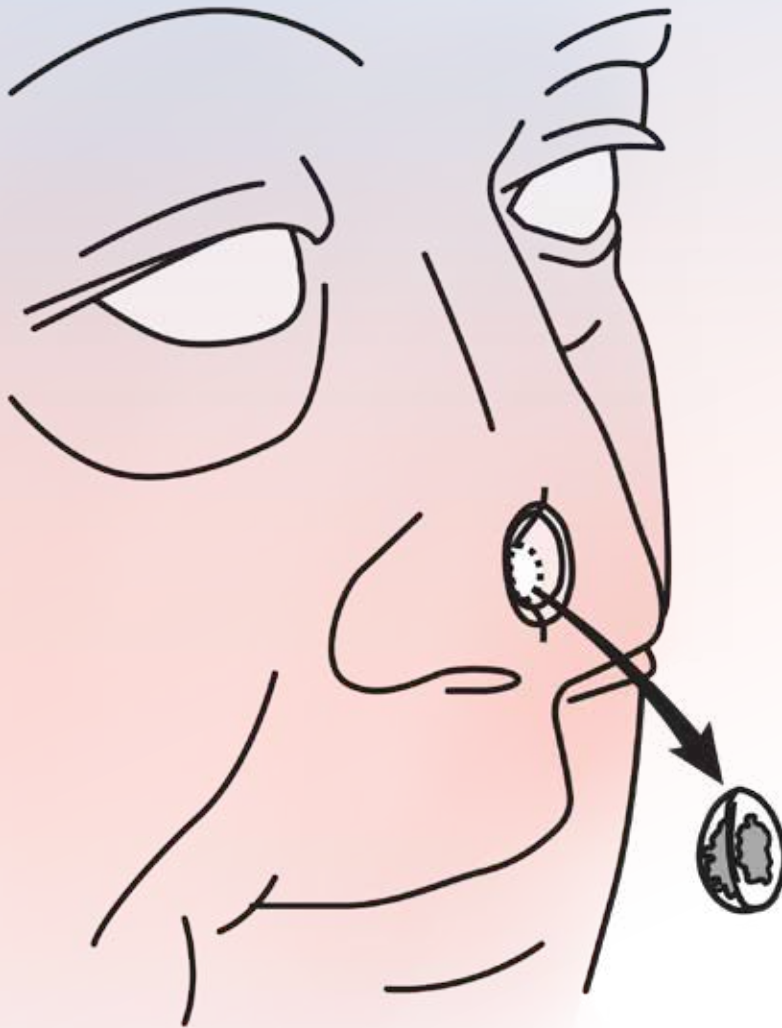


FAST MOHS

IMMUNOHISTOCHEMISTRY

Quality Antibodies | Sensitive Detection | Less Time



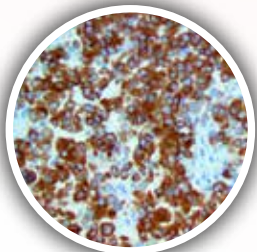
A selection of antibodies, detection systems, and chromogens for fast IHC cancer detection after Mohs surgery.

The most common reason for recurrence of skin cancers after Mohs micrographic surgery (MMS) is residual undetected tumor. Frozen tissue Immunohistochemistry (IHC) has demonstrated greater sensitivity than routine H&E stains, which are difficult to interpret. We have developed a highly sensitive non-biotin monovalent Fab anti-mouse and anti-rabbit micropolymer IHC detection system for the detection of IVD rabbit and mouse monoclonal antibodies for melanoma, BCC, SCC and other Mohs surgery related conditions. Our innovative IHC detection systems, high affinity mouse and rabbit monoclonal antibodies, sensitive substrate-chromogen and unique automated IHC systems, have opened the doors for a faster and accurate immunohistochemistry applicable to MMS.

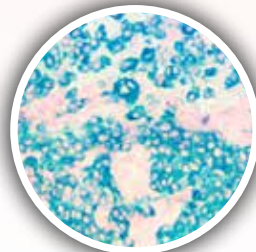
Melanoma Antibodies	
Ki-67, RMab	EP5
MART-1/Melan-A, A103	A103
MART-1/Melan-A, M2-7C10	M2-7C10
Melanoma/KBA.62	KBA6.2
Melanoma/PNL2	PNL2
Melanoma Cocktail	HMB-45, A103 & BSB-6
Melanosome HMB-45	HMB-45
S-100	4C4.9
S100 Beta, RMab	EP32
SOX-10	BSB-62

Melanoma Antibodies	
MEL-5 (Comming Soon)	
MiTF	C5/D5
SOX-10, RMab	EP268
Dermatofibrosarcoma Protuberans (DFSP) Antibodies	
CD34	QBEND/10
CD34, RMab	EP88
Mucinous Carcinoma Antibodies	
Cytokeratin LMW CAM5.2	CAM5.2

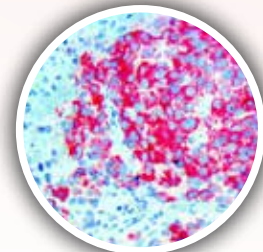
Paget's Disease Antibodies	
Cytokeratin 7	OV-TL12/30
Cytokeratin 7, RMab	EP16
BCC, SCC and Lymphoepithelioma-like Carcinoma Antibodies	
Cytokeratin Cocktail, AE1 & AE3	AE1/AE3
Cytokeratin OSCAR	OSCAR
Cytokeratin MNF116 (Comming Soon)	
EpCAM/Epithelial Specific Antigen	Ber-EP4



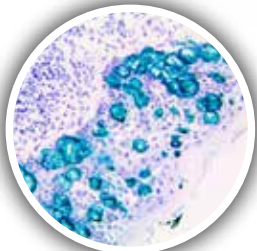
5 min. Mohs IHC with MART-1 using the Fab HRP/ DAB Detection System on a Frozen Mohs Melanoma



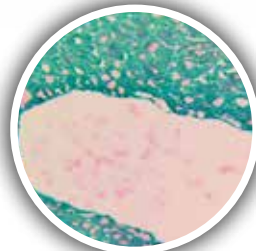
5 min. Mohs IHC MART-1 using the Fab HRP/ HRP Green Detection System on a Frozen Mohs Melanoma



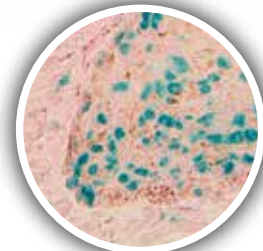
10 min. Mohs IHC MART-1 using the Fab AP/ ALK Magenta Detection System on a Frozen Mohs Melanoma



10 min. Mohs IHC with CK 7 using the Fab HRP/ HRP Green Detection System on a Frozen Extramammary Paget Disease Tissue



10 min. Mohs IHC CK MNF116 using the Fab HRP/ HRP Green Detection System on a Frozen Mohs BCC



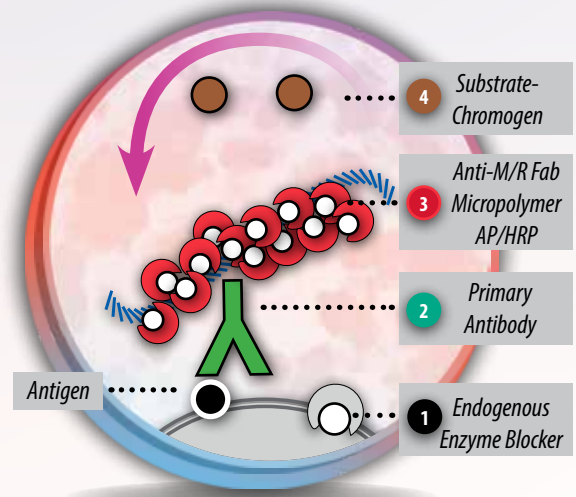
10 min. Mohs IHC SOX-10 using the Fab HRP/ HRP Green Detection System on a Frozen Mohs Melanoma

Detection System For Fast Mohs IHC

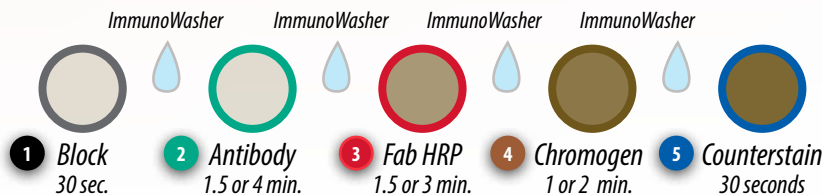
The Bio SB PolyDetector is a non-Biotin, Fab Micropolymer detection system that allows for the demonstration of antigens in formalin-fixed paraffin-embedded tissues, Mohs cryostat sections, blood smears, cytospins, and cell preparations. The PolyDetector technology was developed and is manufactured with a proprietary Micropolymer backbone conjugated to Anti-Mouse and Anti-Rabbit Fab fraction of IgG's plus high quality HRP or AP enzymes. The elimination of the Anti-Mouse and Anti-Rabbit immunoglobulin Fc region reduces non-specific reactions and background. This ensures consistent and reproducible immunostaining for all types of nuclear, cytoplasmic and membranous antigens, in different types of tissues. The increased sensitivity of this system allows for rapid staining procedures without compromising stain quality.

Fab PolyDetector HRP/AP Overview

- Non-Biotin, Fab Micropolymer AP or HRP, 1-Step immunohistochemistry detection technology.
- Fab Micropolymer detection technology allows for better cell penetration to deliver a highly specific and sensitive signal.
- Ready-to-use, high sensitivity system especially designed for immunohistochemistry of formalin-fixed paraffin-embedded or frozen tissues.
- Universal: detects mouse or rabbit antibodies.
- Can be used with DAB HRP Brown, AEC HRP Red, HRP Green, HRP Blue and HRP Black substrate-chromogen for HRP kits.
- Can be used with ALK Red, ALK Blue, ALK Magenta, ALK Brown, ALK Scarlet substrate-chromogens for AP kits.
- For in vitro diagnostic use. All kits manufactured according to US FDA and ISO 13485 guidelines.



Fast Mohs Fab PolyDetector HRP/AP Protocol

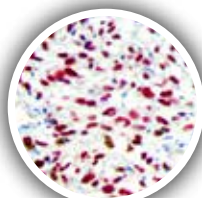


= 5-10 Minute IHC!

Presentations & Volumes

PolyDetector DAB HRP Brown

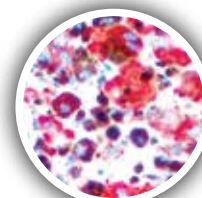
Volume	Catalog #
15 mL	BSB 0201
50 mL	BSB 0203
100 mL	BSB 0205
200 mL	BSB 0207
1000 mL	BSB 0207A



**SOX-10
AEC HRP Red**

PolyDetector AEC HRP Red

Volume	Catalog #
15 mL	BSB 0202
50 mL	BSB 0204
100 mL	BSB 0206
200 mL	BSB 0208
1000 mL	BSB 0208A



**S-100
AEC HRP Red**

PolyDetector AP Kits

Volume	Catalog #
15 mL	BSB 0282
50 mL	BSB 0283
100 mL	BSB 0284
200 mL	BSB 0285
1000 mL	BSB 0286

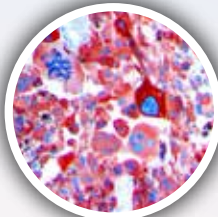
Bio SB substrate-chromogens are highly sensitive chromogens that are optimized for use in immunohistochemistry. Multiplex IHC users can pair Bio SB AP & HRP PolyDetector systems with any combination of AP & HRP substrate-chromogens to detect multiple antigens on the same tissue. Ideal for both clinical and research settings.

HRP Substrate-Chromogens

DAB HRP Brown

2 component substrate-chromogen

Volume	Catalog #
15 mL	BSB 0015
50 mL	BSB 0016
100 mL	BSB 0017
200 mL	BSB 0018
1000 mL	BSB 0018B

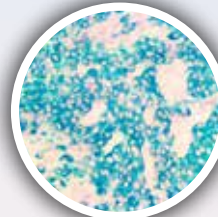


S100

AEC HRP Red

Ready-to-use substrate-chromogen

Volume	Catalog #
15 mL	BSB 0011
50 mL	BSB 0012
100 mL	BSB 0013
200 mL	BSB 0014
1000 mL	BSB 0061



Melanoma Cocktail

HRP Green

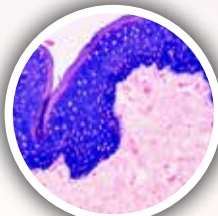
2 component substrate-chromogen

Volume	Catalog #
15 mL	BSB 0128
50 mL	BSB 0129
100 mL	BSB 0130
200 mL	BSB 0131
1000 mL	BSB 0133

HRP Black

2 component substrate-chromogen

Volume	Catalog #
15 mL	BSB 0087
50 mL	BSB 0088
100 mL	BSB 0089
200 mL	BSB 0090A
1000 mL	BSB 0090C



CK MNF116

HRP Blue

2 component substrate-chromogen

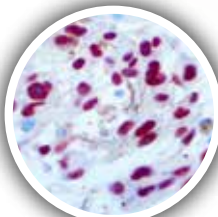
Volume	Catalog #
15 mL	BSB 0143
50 mL	BSB 0144
100 mL	BSB 0145
200 mL	BSB 0146
1000 mL	BSB 0148

AP Substrate-Chromogens

Alk Blue

Ready-to-use substrate-chromogen

Volume	Catalog #
15 mL	BSB 0062
50 mL	BSB 0063
100 mL	BSB 0064
200 mL	BSB 0065
1000 mL	BSB 0066



SOX-10

Alk Red

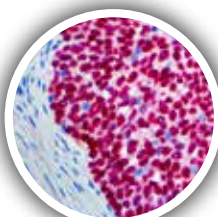
Ready-to-use substrate-chromogen

Volume	Catalog #
15 mL	BSB 0067
50 mL	BSB 0068
100 mL	BSB 0069
200 mL	BSB 0070
1000 mL	BSB 0071

Alk Brown

Ready-to-use substrate-chromogen

Volume	Catalog #
15 mL	BSB 0072
50 mL	BSB 0073
100 mL	BSB 0074
200 mL	BSB 0075
1000 mL	BSB 0076

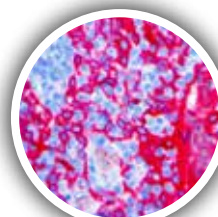


p63

Alk Scarlet

2 component substrate-chromogen

Volume	Catalog #
15 mL	BSB 0138
50 mL	BSB 0139
100 mL	BSB 0140
200 mL	BSB 0141
1000 mL	BSB 0142



CK AE1/AE3

Alk Magenta

3 component substrate-chromogen

Volume	Catalog #
15 mL	BSB 0077
50 mL	BSB 0078
100 mL	BSB 0079
200 mL	BSB 0080
1000 mL	BSB 0081

ChromoProtector



Volume	Catalog #
15 mL	BSB 0151
50 mL	BSB 0152
100 mL	BSB 0153
200 mL	BSB 0154
1000 mL	BSB 0156

Great for stabilizing signals of AEC HRP Red, HRP Green, ALK Red, ALK Magenta, Alk Brown. Has the ability to allow permanent mounting of these substrate-chromogens.

Bio SB Inc.

69 Santa Felicia Drive, Santa Barbara, CA 93117, USA

Tel (USA): 1-800-561-1145 | Tel (Int): +1-805-692-2768 | Fax: 805-692-2769

E-mail: sales@biosb.com | Website: www.biosb.com