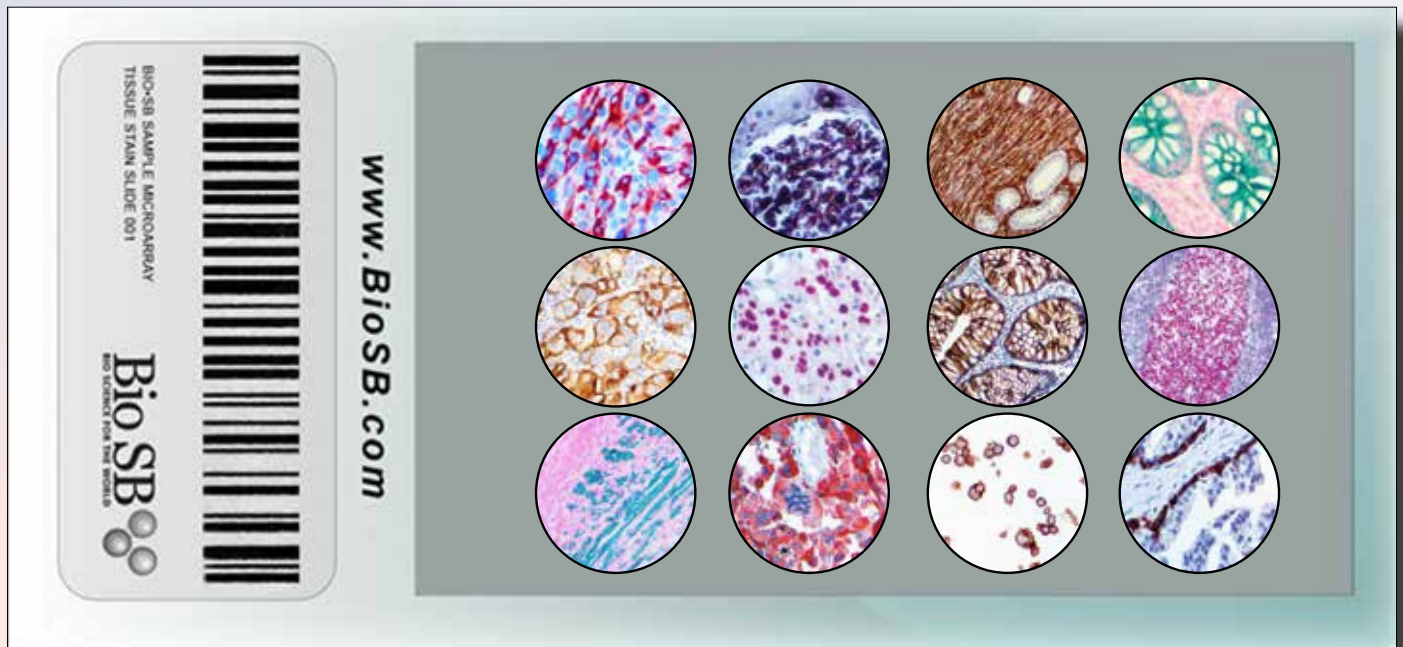


# TISSUE MICROARRAYS AND CONTROL SLIDES

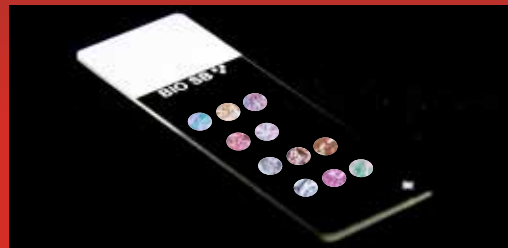
Tissue Microarrays | Infectious Disease Arrays | IHC & ISH Validated



As the diagnostics market continues to grow, researchers and clinicians have a greater need for a wide variety of high quality and cost effective control slides. Control slides are invaluable tools utilized by institutions when validating reagents, qualifying new products, testing protocols or performing research which requires multiple tissue types. Bio SB control slides are cost effective, high quality tissues mounted on Hydrophilic Plus slides which are validated for use in immunohistochemical (IHC) and in situ hybridization (ISH) applications.

## Tissue Microarray Features

- Easy method of antibody validation.
- Cost effective diagnostic control.
- Test a large number of tissue types on one slide.
- Available in 11 or 23 core format.
- Validated for use with over 200 antibodies used in Immunohistochemistry .



Above: Depiction of Normal Human 11 Core TMA

## Normal Human Tissue Microarray (NH-TMA), Cancer Human Tissue Microarray (CH-TMA) and Cancer Human Cell Line Microarray (CH-CLMA)

The Normal Human Tissue Microarray, or NH-TMA, Cancer Human Tissue Microarray, or CH-TMA, and Cancer Human Cell Line Microarray, or CH-CLMA, are an excellent way to test and validate an antibody, ISH probe or other reagent on multiple tissues. The Bio SB NH-TMA's and CH-TMA's are available in both 11 or 23-core configurations. The Bio SB NH-TMA's, CH-TMA's and CH-CLMA's are an excellent way for clinics and research labs to save time and money by allowing multiple tissues to be tested on one slide.



### BSB 0297 - 11 Core Normal Human Tissue Microarray (NH-TMA)

PL - Placenta	Blank	LV - Liver	TL - Tonsil
CL - Colon	SK - Skin	BRN - Brain	BRS - Breast
PR - Prostate	TH - Thyroid	KD - Kidney	FT - Fallopian Tube

### BSB 0298 - 23 Core Normal Human Tissue Microarray (NH-TMA)

PL - Placenta	Blank	BRS - Breast	MY - Myometrium	CX - Cervix	FT - Fallopian Tube
BRN - Brain	PT - Pituitary	AD - Adrenal	PC - Pancreas	SG - Salivary	CL - Colon
LV - Liver	KD - Kidney	TH - Thyroid	LG - Lung	SK - Skin	BL - Bladder
TS - Testis	PR - Prostate	SP - Spleen	TL - Tonsil	BM - Bone Marrow	TY - Thymus

### BSB 0299 - 7 Core Normal Human Lymphoid Tissue Microarray

TL - Tonsil	Blank	LN - Lymph Node	SP - Spleen
TL - Tonsil	TY - Thymus	LN - Lymph Node	SP - Spleen

The maps above outline the various normal tissue types used. Each slide comes with a "blank" core for easy orientation & interpretation.

## Cancer Human Tissue Microarrays (CH-TMA)

The Human Cancer Tissue Microarrays (CH-TMA) consist of 2 mm cores of cancer human formalin-fixed paraffin-embedded tissues which were assembled in array fashion to allow multiplex molecular pathology analysis and validation of reagents, or to be used as tissue controls for Immunohistochemistry and/or in-situ hybridization (CISH and FISH) applications.



### BSB 0230 - 11 Core Cancer Human Tissue Microarray

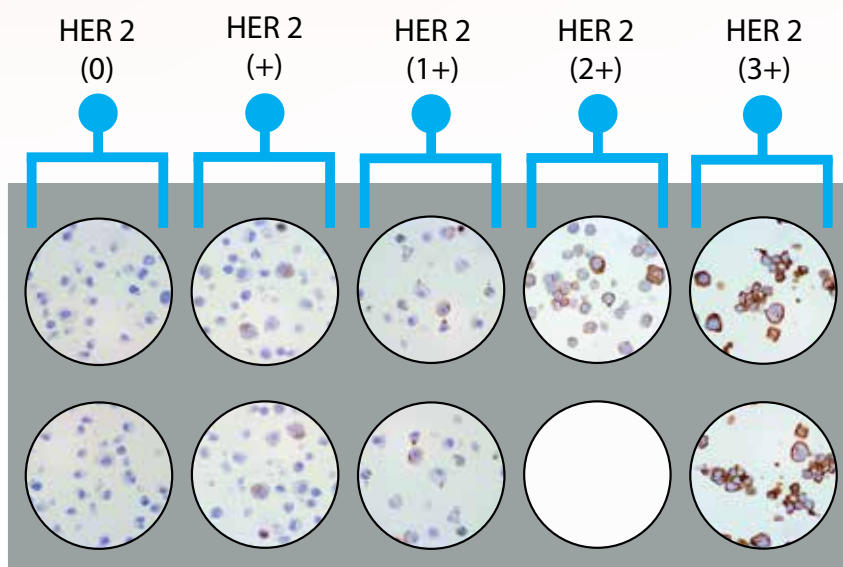
The Human Cancer 11-core TMA contains the following human cancer tissues: Chronic Granulocytic Leukemia, Colon Cancer, Prostate Cancer, Squamous Cell Carcinoma, Papillary Thyroid Carcinoma, Ovarian Cancer, Bladder TCC, Melanoma, Testicular Cancer, Ductal Breast Carcinoma, and Cervical Cancer.

Cancer Human Tissue Microarrays	Catalog #
11-Core Human Cancer TMA	BSB 0230
23-Core Human Cancer TMA	BSB 0231

\* Tissue selection may vary from lot to lot

## Cancer Human Cell Line Microarrays (CH-CLMA)

The Cancer Human Cell Line Microarrays (CH-CLM) consist of 2 mm cores of cancer human formalin-fixed paraffin-embedded cell lines which were assembled in array fashion to allow multiplex molecular pathology analysis and validation of reagents, or to be used as tissue controls for Immunohistochemistry, Immunocytochemistry and/or in-situ hybridization (CISH and FISH) applications.

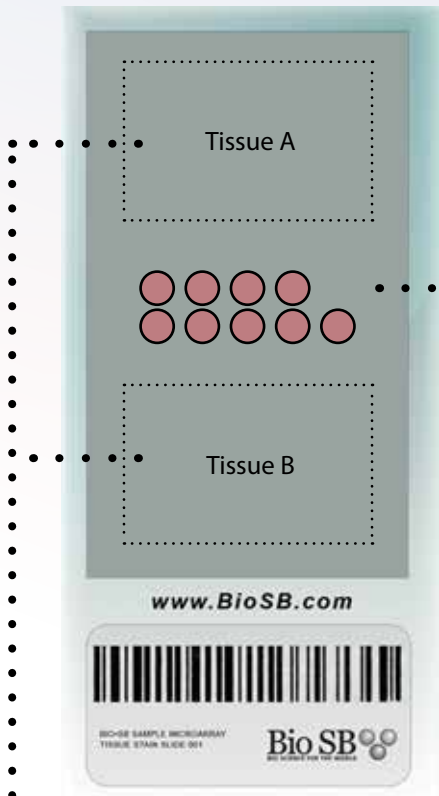


Above: HER-2 Cell Line Microarray with various signal strengths.

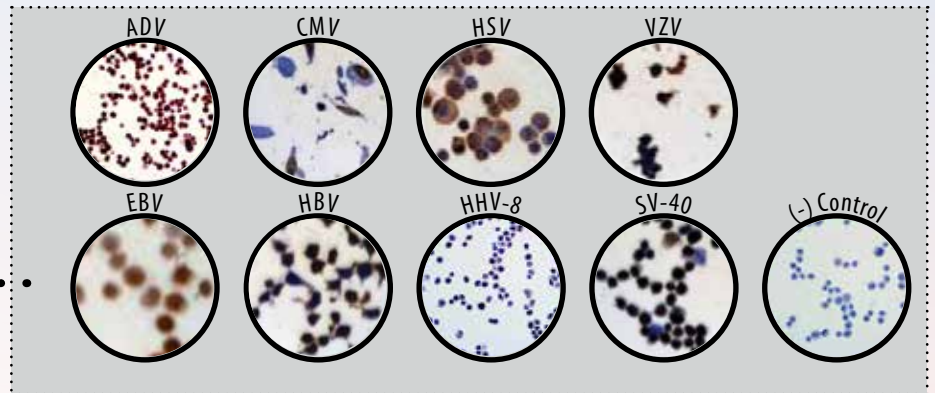
Cell Line Microarrays	Catalog #
3-Core ALK CLMA	BSB 0296
9- Core HER-2 CLMA (0, 1+, 2+, 3+ in duplicates)	BSB 0292
7-Core ER/PR CLMA	BSB 0293
7-Core EGFR CLMA	BSB 0295
9-Core PTEN CLMA	BSB 0300
7-Core PD-L1 CLMA	BSB 0301
5-Core BRAF V600E CLMA	BSB 0305
11-Core Breast Cancer CLMA	BSB 0302
7-Core HPV Cervical Cancer CLMA	BSB 0294
3-Core Lung Cancer CLMA	BSB 0296
3-Core GIST CLMA	BSB 0242
5-Core Melanoma CLMA	BSB 0243
3-Core Neuroblastoma CLMA	BSB 0303
11-Core Immunotherapy CLMA	BSB 0304
31-Core Multi Cancer CLMA	BSB 0244

## Infectious Disease Cell Line Microarray (ID-CLMA)

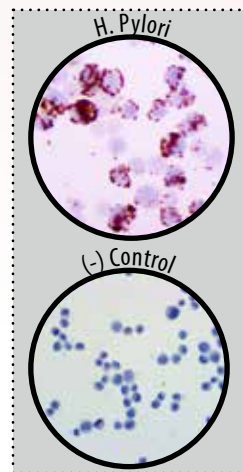
The Bio SB Infectious Disease cell line Microarray, or ID-CLMA is a simple and cost effective way to test and validate infectious disease markers by immunohistochemical (IHC) or in situ hybridization (ISH). The ID-Microarray is available in a 9-core or Individual virus configuration, and includes two areas for tissue mounting. All TMA's include negative controls to reduce interpretation error.



Two tissue mounting areas allow for maximum flexibility and integration for users with automated or manual IHC/ISH systems.



Above: 9-Core Multi-Infectious Cell Line Microarray (BSB 0232)

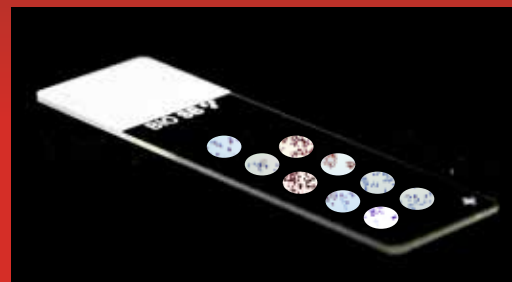


Above: 2-Core H. Pylori Cell Line Microarray (BSB 0241).

Infectious Disease CLMA's	Catalog #
Multi ID-Array (9-Core)	BSB 0232
Adenovirus ID-Array (2-Core)	BSB 0233
CMV ID-Array (2-Core)	BSB 0234
HSV ID-Array (2-Core)	BSB 0235
VZV ID-Array (2-Core)	BSB 0236
EBV ID-Array (2-Core)	BSB 0237
HBV ID-Array (2-Core)	BSB 0238
HHV-8 ID-Array (2-Core)	BSB 0239
SV-40 ID-Array (2-Core)	BSB 0240
H.Pylori ID-Array (2-Core)	BSB 0241

## ID-CLMA

- Test multiple infectious disease markers.
- Optimized for IHC & ISH Applications.
- Cost effective solution.
- Test multiple samples at once.
- Two control tissue mounting areas for Manual or Automated IHC/ISH users.



Bio SB Inc.

69 Santa Felicia Drive, Santa Barbara, CA 93117, USA

Tel (USA): 1-800-561-1145 | Tel (Int): +1-805-692-2768 | Fax: 805-6922769

E-mail: sales@biosb.com | Website: www.biosb.com