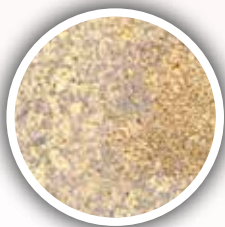


Bio SB is proud to present one of the largest portfolios of rabbit monoclonal antibodies available in the molecular pathology industry. The Bio SB line of rabbit monoclonal antibodies offer better signal and less background than mouse monoclonal or rabbit polyclonal antibodies. With a selection of over 220 Rabbit monoclonal antibodies, a diverse selection of detection systems, excellent technical and customer service, Bio SB is committed to helping laboratories find the right solution to their Molecular Pathology needs.

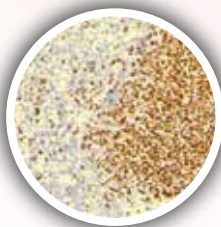
Why Rabbit Monoclonal Antibodies?

- Higher Affinity
- Stronger Signal
- Less Background
- Increased Sensitivity
- Higher Specificity
- Supported by Research Publications
- Multiple Applications (IHC, Flow Cytometry, etc.)

Mouse & Rabbit Monoclonal Comparison



Cyclin D1
Mouse Monoclonal



Cyclin D1
Rabbit Monoclonal

Rabbit Monoclonal Presentation

Tinto Prediluted Antibodies

3 mL Tinto Predilute (30 tests)
7 mL Tinto Predilute (70 tests)
15 mL Tinto Predilute (150 tests)

- No need for antibody titering or optimization.
- Compatible with biotin or micro-polymer based detection systems.

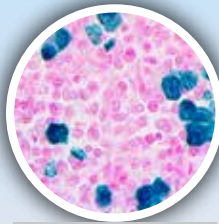
Concentrated Antibodies

0.1 mL Concentrate
0.5 mL Concentrate
1 mL Concentrate

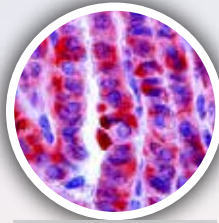
- Cost effective solution.
- Compatible with biotin or micro-polymer based detection systems.
- Can be optimized to meet the needs of each laboratory.

Antibody	Clone
Aldh1A1	EP168
ALK-1	RBT-ALK1
ALK	EP301
Alpha-Fetoprotein	EP209
AMACRacemase	13H4
Amyloid A	EP335
Amyloid Beta	RBT-A4
Arginase-1	EP261
B7H3/CD276	RBT-B7H3
Bax	E63
bcl-2	EP36
bcl-6	EP278
bcl-6	RBT-bcl6
Bcl-x	EP94
Beta-Catenin	EP35
BOB.1	EP114
BRAF V600 E	RM8
C4d	EP273
c-Myc	EP121
c-Met	EP1454Y
CA-125	EP48
Cadherin-6	EP217
Cadherin-17	EP86
Calcitonin	EP92
Calretinin	EP1798
Carbonic Anhydrase 9	EP161
Caveolin 1	EP353
CD1a	EP80
CD3 Epsilon	RBT-CD3e
CD3	RBT-CD3
CD4	RBT-CD4
CD5	RED1
CD5	RBT-CD5
CD7	EP132
CD8	EP334
CD10	EP195
CD11b	EP45
CD11c	EP157
CD13	EP117
CD14	EP128
CD15	EP272
CD16	EP364

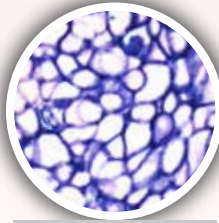
Antibody	Clone
CD19	EP169
CD21	EP64
CD23	EP75
CD25	RBT-CD25
CD33	RBT-CD33
CD34	EP88
CD35	EP197
CD38	EP135
CD41	EP178
CD103	EP206
CD105	EP274
CD117	EP10
CD138	EP201
CD163	EP324
CDK2	RBT-CDK2
CDK4	EP180
CDX2	EP25
Claudin-5	EP224
Clusterin/Apolipoprotein	EP181
COX-2	RBT-COX2
COX-2	EP293
Cyclin B1	RBT-B1
Cyclin D1	RBT14
Cyclin D1	EP12
Cyclin E1	EP126
Cytokeratin 4	EP4
Cytokeratin 5	EP24
Cytokeratin 5 & 6	EP24/EP67
Cytokeratin 5 & ERG	EP24/EP111
Cytokeratin 5 & 6 & ERG	EP24/EP67/EP111
Cytokeratin 5 & 14	EP24/EP61
Cytokeratin 6	EP67
Cytokeratin 7	EP16
Cytokeratin 7 & CDX2	EP16/ EP25
Cytokeratin 8	EP17
Cytokeratin 8&18	EP17 & EP30
Cytokeratin 10	EP97
Cytokeratin 13	EP69
Cytokeratin 14	EP61
Cytokeratin 15	EP14
Cytokeratin 16	EP297
Cytokeratin 17	EP98
Cytokeratin 18	EP30
Cytokeratin 19	EP72
Cytokeratin 20	EP23
Desmin	EP15



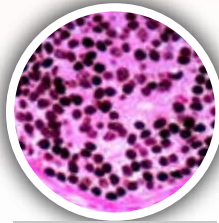
ALK-1



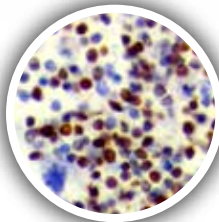
BRAF V600E



HER-2



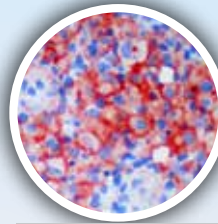
GATA3



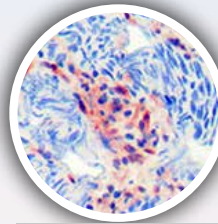
LEF-1

Antibody	Clone
Desmoglein-3	EP306
DOG-1	EP332
DOG-1	RBT-DOG1
E2F4	EP252
E-Cadherin	EP6
EGFR Phospho	EP11
ERCC1	EP219
ERG	EP111
Estrogen Receptor	RBT11
Estrogen Receptor	EP1
Factor XIIIa	EP3372
FOXA1	EP277
FOXO1	EP290
FOXP1	EP137
FOXP3	EP340
GATA3	EP368
GCDFP-15	EP95
GFAP	EP13
GH	EP267
Glucagon	EP74
GLUT1	EP141
Granzyme B	EP230
HE4	EP370
Helicobacter Pylori	EP279
Hemoglobin A	EP124
HER-2 neu	RBT-HER2
HER-2 neu	EP3
HR-2 neu Phospho	EP123
HER-3	RBT-HER3
hGAL	EP316
HIF-1 alpha	EP118
Histone H3 Phospho	EP233
HLA-DR alpha	EP96
HLA-DRB1 beta	EP191
hPL	EP241
IgD	EP173
IgG4	EP138
IMP-3	EP286
Inhibin Alpha	EP378
iNOS	RBT-iNOS
Insulin	EP125
Islet 1	EP283
Ki-67	EP5
LAG-3	EP294
Langerin/CD207	EP349
LEF-1	EP310

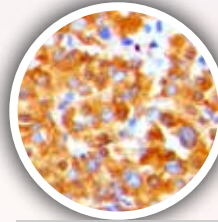
Antibody	Clone
Lysozyme	EP134
Mammaglobin	EP249
MCM2	RBT-MCM2
MCM3	EP202
MCM5	RBT-MCM5
MDR-1	EP271
Mesothelin	EP140
MMP-9	EP127
MSH2	RBT-MSH2
MSH6	EP49
MUC1	EP85
MUC2	EP187
MUC4	EP256
MUM1	EP190
Myelin Basic Protein	EP207
Myeloperoxidase	EP151
MyoD1	EP212
Myogenin	EP162
Myoglobin	EP87
Napsin A	EP205
Neutrophil Elastase	EP223
Nestin	EP286
Neurofilament	EP79
NKX2.2	EP336
NKX3.1	EP356
NRAS	RBT-NRAS
OCT-2	EP115
OCT-4	EP143
OLIG2	EP112
p40	ZR8
p63	EP174
p120 Catenin	EP66
Parvalbumin	EP300
PAX-2	EP235
PAX-5	RBT-PAX5
PAX-6	EP341
PAX-8	EP298
PAX-8	ZR-1
PD-1/CD279	EP239
PD-L1	RBT-PDL1
PDX1	EP139
PLAP	EP194
PMS2	EP51



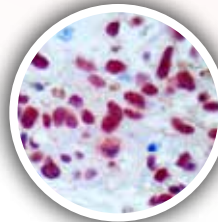
PD-L1



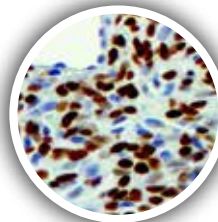
PTEN



SMAD4/DPC4



SOX-10



STAT6

Antibody	Clone
Progesterone Receptor	RBT22
Progesterone Receptor	EP2
Prolactin	EP193
Prostein/P501S	ZR-9
PSA	RBT-PSA
PSAP	EP53
PSMA	EP192
PSP94/MSMB	EP203
PTEN	RBT-PTEN
PU.1	EP18
S100A1	EP184
S100A6	EP313
S100A8/MRP8	EP90
S100A9	EP185
S100Beta	EP32
S100P	EP186
SALL4	EP299
SATB2	EP281
SMAD4/DPC4	RBT-SMAD4
Somatostatin	EP130
SOX-2	EP103
SOX-9	EP317
SOX-10	EP268
Spectrin	EP251
STAT6	EP325
Stathmin	EP247
Survivin	EP119
Synaptophysin	EP158
T-bet	EP263
TCL1	EP105
TdT	RBT-TdT
TdT	EP266
TFE3	EP285
Thrombomodulin	EP175
Thyroglobulin	EP250
Thyroid Peroxidase	EP159
Topoisomerase IIa	RBT-Topo2a
Tryptase	EP259
TSH	EP254
Uroplakin III	EP321
VEGF	RBT-VEGF
Villin	EP163
Vimentin	EP21

Bio SB Inc.

69 Santa Felicia Drive, Santa Barbara, CA 93117, USA

Tel (USA): 1-800-561-1145 | Tel (Int): +1-805-692-2768 | Fax: 805-692-2769

E-mail: info@biosb.com | Website: www.biosb.com