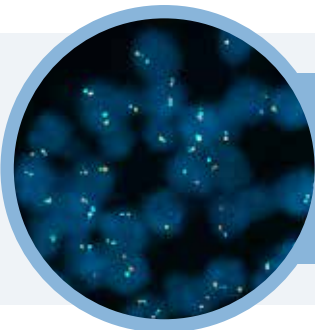


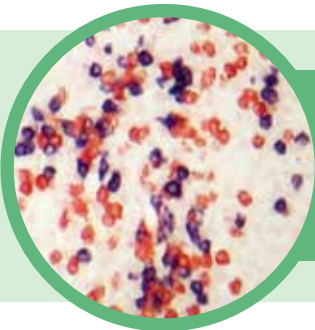
## *In situ* Hybridization

ZytoLight® FISH | ZytoDot® CISH | ZytoFast® Rapid CISH

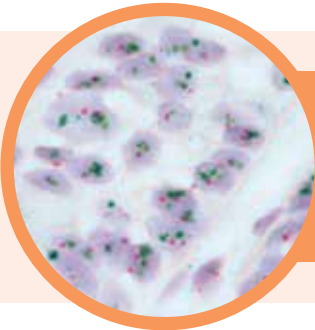
A diverse selection of innovative, high quality and cost effective ISH probes, kits, ancillaries and equipment.



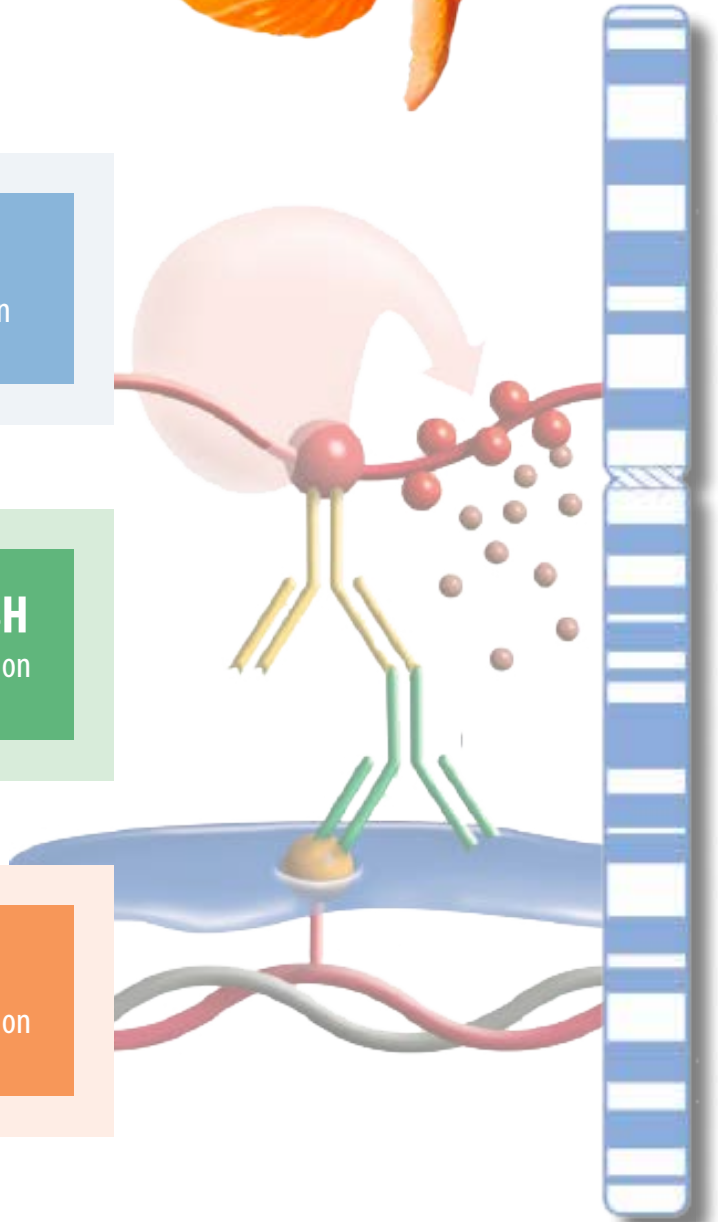
**ZytoLight® FISH**  
Fluorescent in situ Hybridization



**ZytoFast® Rapid CISH**  
Chromogenic in situ Hybridization



**ZytoDot® CISH**  
Chromogenic in situ Hybridization



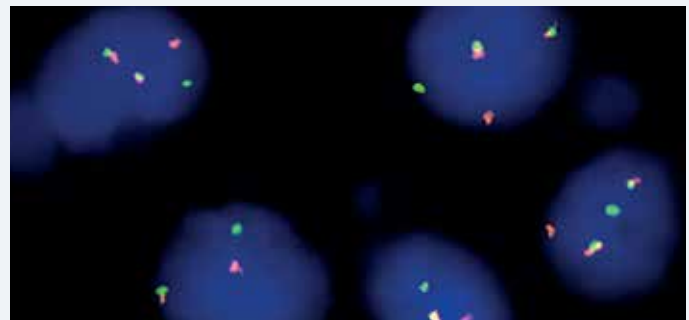
Bio SB, through its distribution partnership with ZytoVision of Germany offers one of the largest arrays of CISH & FISH product lines in the molecular pathology industry. ZytoFast® and ZytoDot® offer a wide variety of Chromogenic (CISH) solutions. For those interested in implementing Fluorescent (FISH) based technologies, the ZytoLight® product line offers over 100 single, dual, triple and quadruple color probes.

## ZytoLight®

The ZytoLight line of products is designed for use in detecting translocations, deletions, amplifications and chromosomal aneuploidies by fluorescent *in situ* hybridization (FISH). ZytoLight products can be used on formalin-fixed paraffin-embedded tissue (FFPE), cell samples, blood/bone marrow smears and metaphase chromosome spreads. With a selection of over 100 single, dual, triple and quadruple color fluorescent probes spanning across multiple applications, clinicians and researchers can find the product best suited for their needs.

### ZytoLight® Features

- Highly sensitive and specific probes.
- *Direct Label* technology provides high signal intensity.
- Wide variety of over 100 probes.
- Single, dual, triple and quadruple color probes available.
- Inquire about FISH equipment & ancillaries.



Above: ZytoLight BCL2 Dual Color Break Apart Probe  
Catalog Number: Z-2192-200

### Highlighted ZytoLight® Products



#### Breast Cancer Probes

ZytoLight ERBB2/D17S122 Dual Color Probe

ZytoLight VEGFA/CEN 6 Dual Color Probe

ZytoLight MYC/CEN 8 Dual Color Probe

ZytoLight ERBB2/TOP2A/CEN 17 Triple Color Probe



#### Sarcoma Probes

ZytoLight YWHAE Dual Color Break Apart Probe

ZytoLight SMARCB1/22q12 Dual Color Probe

ZytoLight MDM2/CEN 12 Dual Color Probe



#### Lung Cancer Probes

ZytoLight CD274 PDCD1LG2/CEN 9 Dual Color Probe

ZytoLight NRG1 Dual Color Break Apart Probe

ZytoLight BRAF/CEN 7 Dual Color Probe

ZytoLight ALK/EML4 TriCheck™ Probe



#### Other Solid Tumor Probes

ZytoLight BRAF Dual Color Break Apart Probe

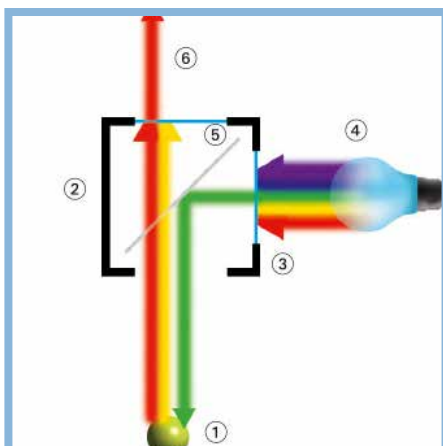
ZytoLight MYCN/2q11 Dual Color Probe



#### Implementation Kit

Includes pretreatment, pepsin, wash & DAPI

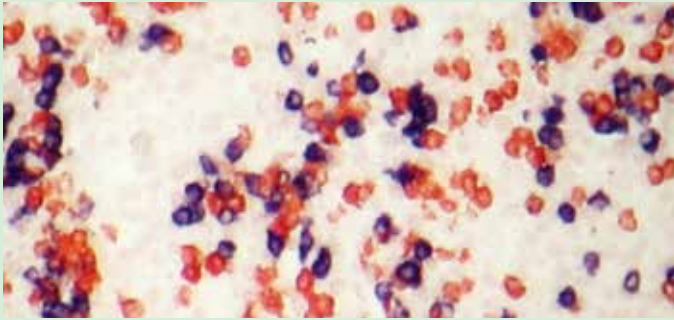
ZytoLight FISH Tissue Implementation Kit



#### ZytoLight Technology

1. FISH labeled probe
2. Detection by fluorescence
3. Exciter filter used
4. Light emitted by microscope lamp which excites fluorophore
5. Light reflected by mirror
6. Fluorophore emits light & barrier filter used.

ZytoFast allows users to implement CISH technologies into the laboratory with minimal effort and reduced hands on time. The ZytoFast line of products allows for the rapid detection of human pathogens and lymphocyte clonality on FFPE tissues and cell samples. ZytoFast CISH results can be generated in as little as 4 hours, and viewed under a standard light microscope.



Above: ZytoFast Dual Color Kappa/Lambda Probe.  
Catalog Number: T-1017-400

### ZytoFast® Features

- Highly sensitive and specific CISH probes.
- Results in as little as 4 hours.
- Easily observe tissue morphology.
- Utilizes standard light microscopy.
- Available as biotin or digoxigenin labeled probes.
- Excellent complimentary test to Immunohistochemistry.

### Highlighted ZytoFast® Products

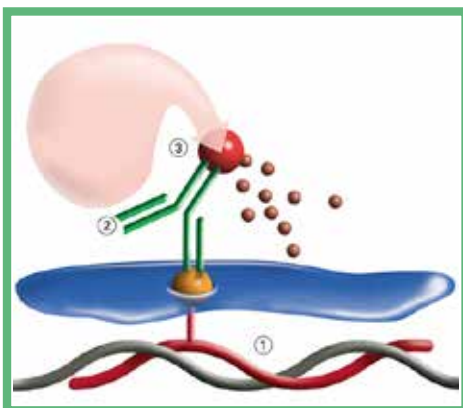
All ZytoFast products are available in Digoxigenin-labeled or Biotin-labeled configurations. For a complete product listing and relevant catalog numbers, contact Bio SB or visit [www.biosb.com/fish-cish](http://www.biosb.com/fish-cish).

#### Pathogens & Lymphomas

- ZytoFast EBV Probe
- ZytoFast human Ig-kappa Probe
- ZytoFast human Ig-lambda Probe
- ZytoFast human Ig-kappa/Ig-lambda Probe
- ZytoFast DNA/RNA (+) and (-) Control Probes

#### HPV Probes

- ZytoFast HPV type 6/11 Probe
- ZytoFast HPV type 16/18 Probe
- ZytoFast HPV type 31/33 Probe
- ZytoFast HPV type 16/18/31/33/35 Probe
- ZytoFast HPV High-Risk (HR) Types Probe
- ZytoFast HPV Screening Probe (17 types)



#### ZytoFast Technology

1. Biotin/Digoxigenin Tagged Probe
2. Enzyme conjugated antibodies or streptavidin
3. Chromogen binding which leads to colored precipitate
4. Visual results easily interpreted using light microscopy

#### ZytoFast® Implementation Kits

Implementation kits include (+) and (-) control probe, EDTA, Pepsin, Wash, AP/HRP Polymer, counterstain & mounting solution.

- ZytoFast CISH Implementation Kit AP-NBT/BCIP
- ZytoFast CISH Implementation Kit HRP-AEC
- ZytoFast CISH Implementation Kit HRP-DAB
- ZytoFast CISH Implementation Kit HRP-Green
- ZytoFast CISH Implementation Kit AP-Perm Red

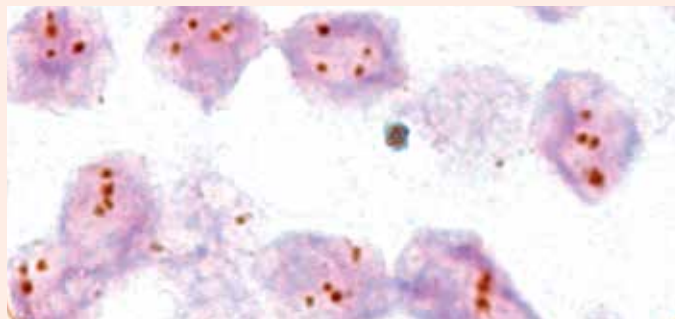
The ZytoDot line of products is a selection of over 100 single & dual color chromogenic probes for use in molecular pathology. ZytoDot products are specifically designed for the detection of aneuploidies and gene amplifications by chromogenic *in situ* hybridization (CISH) and have a wide variety of applications.

Like ZytoFast, the ZytoDot line is optimized for use on formalin-fixed paraffin-embedded (FFPE) tissues or cell samples. Results can be easily interpreted easily via light microscopy.

The ZytoVision *Repeat Subtraction* technology results in advanced specificity with less background, ensuring that your results are easy to interpret while reducing the amount of blocking for repetitive sequences. ZytoDot probes can be combined with ZytoDot Implementation kits to offer a complete solution for those wishing to integrate CISH into the laboratory.

## ZytoDot® Features

- Large variety of single and dual color probes.
- Highly sensitive and specific detection.
- Easily observe tissue morphology.
- Results can be viewed via light microscopy.
- Available as biotin or digoxigenin labeled probes.
- Purchase individual probes or as a complete kit.
- Excellent complimentary test to IHC.



Above: ZytoDot MYC Probe  
Catalog Number: C-3013-400

## Highlighted ZytoDot® Products



### Breast/Cervical Cancer Probes

ZytoDot 2C TOP2A/CEN 17 Probe

ZytoDot 2C ERBB2/CEN 17 Probe Kit

ZytoDot 2C FGFR2/CEN 10 Probe

ZytoDot MYC Probe

ZytoDot 2C TOP2A/CEN 17 Probe



### Lung Cancer Probes

ZytoDot 2C ROS1 Break Apart Probe

ZytoDot 2C RET Break Apart Probe

ZytoDot 2C ERBB2/D17S122 Probe

ZytoDot 2C ALK Break Apart Probe

ZytoDot 2C FGFR1/CEN 8 Probe



### Glioma Probes

ZytoDot 2C CDKN2A/CEN 9 Probe

ZytoDot 2C PTEN/CEN 10 Probe

ZytoDot 2C MET/CEN 7 Probe



### Sarcoma Probes

ZytoDot 2C CDK4/CEN 12 Probe

ZytoDot 2C FOXO1 Break Apart Probe

ZytoDot 2C SS18 Break Apart Probe



### ZytoDot® Implementation Kits

Implementation kits include (+) and (-) control probe, EDTA, Pepsin, Wash, AP/HRP Polymer, chromogen, counterstain & mounting solution.

ZytoDot CISH Implementation Kit (Single Color)

ZytoDot 2C CISH Implementation Kit (Dual Color)

All ZytoVision products are manufactured in Bremerhaven, Germany by ZytoVision GmbH, and meet CE, ISO 9001 and ISO 13485 standards. For a full product listing of ZytoVision products available in US & Latin America visit [www.biosb.com/fish-cish](http://www.biosb.com/fish-cish)

## Ordering

### United States

Phone: 1-800-561-1145

### International

Phone: 1-805-692-2768

### Global Distribution

[www.biosb.com/distributors](http://www.biosb.com/distributors)