

ZytoLight
SPEC CCND1 Break Apart/
2q11/CEN 6 Quadruple Color Probe

REF Z-2118-200

Σ 20 (0.2 ml)

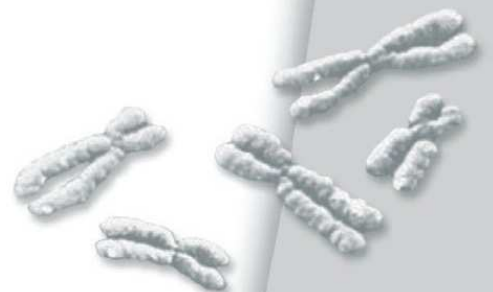
For the detection of translocations involving the CCND1 gene at 11q13.3 as well as for the detection of human chromosomes 2 and 6 by fluorescence *in situ* hybridization (FISH)



IVD

In vitro diagnostic medical device

according to EU directive 98/79/EC



Fluorescence-labeled polynucleotide probe for the detection of translocations involving the CCND1 gene at 11q13.3 as well as for the detection of human chromosomes 2 and 6, ready to use

Product Description

- Content:** ZytoLight SPEC CCND1 Break Apart/2q11/CEN 6 Quadruple Color Probe (PL75) in hybridization buffer. The probe contains green-labeled polynucleotides (ZyGreen: excitation at 503 nm and emission at 528 nm, similar to FITC), which target sequences mapping in 11q13.2-q13.3 proximal to the CCND1 locus, and red-labeled polynucleotides (ZyRed: excitation at 580 nm and emission at 599 nm, similar to Texas Red), which target sequences mapping in 11q13.3 distal to and covering the CCND1 locus. Additionally, the probe contains blue-labeled polynucleotides (ZyBlue: excitation at 418 nm and emission at 467 nm, similar to DEAC) which target sequences of chromosome 2 in the chromosomal region 2q11.2, gold-labeled polynucleotides (ZyGold: excitation at 532 nm and emission at 553 nm, similar to Rhodamine 6G), which target alpha-satellite-sequences of the centromere of chromosome 6.
- Product:** Z-2118-200: 0.2 ml (20 reactions of 10 µl each)
- Specificity:** The ZytoLight SPEC CCND1 Break Apart/2q11/CEN 6 Quadruple Color Probe (PL75) is designed to be used for the detection of translocations involving the chromosomal region 11q13.3 as well as for the detection of chromosome 2 and 6 specific sequences in formalin-fixed, paraffin-embedded tissue or cells by fluorescence *in situ* hybridization (FISH).

- Storage/Stability:** The ZytoLight SPEC CCND1 Break Apart/2q11/CEN 6 Quadruple Color Probe (PL75) must be stored at 2...8°C protected from light and is stable through the expiry date printed on the label.
- Use:** This product is designed for *in vitro* diagnostic use (according to EU directive 98/79/EC). Interpretation of results must be made within the context of the patient's clinical history with respect to further clinical and pathologic data of the patient by a qualified pathologist!
- Safety Precautions:** Read the operating instructions prior to use!
- Do not use the reagents after the expiry date has been reached!
- This product contains substances (in low concentrations and volumes) that are harmful to health. Avoid any direct contact with the reagents. Take appropriate protective measures (use disposable gloves, protective glasses, and lab garments)!
- If reagents come into contact with skin, rinse skin immediately with copious quantities of water!
- A material safety data sheet is available on request for the professional user!

Principle of the Method

The presence of certain nucleic acid sequences in cells or tissue can be detected by *in situ* hybridization using labeled DNA probes. The hybridization results in duplex formation of sequences present in the test object with the labeled DNA probe.

Duplex formation (with sequences of the chromosomal region 11q13.2-q13.3 as well as of the chromosomes 2 and 6 in the test material) is directly detected by using the tags of fluorescence-labeled polynucleotides.

Instructions

Pretreatment (dewaxing, proteolysis, post-fixation) should be carried out according to the needs of the user.

Denaturation and hybridization of probe:

- 1.** Pipette 10 μ l ZytoLight SPEC CCND1 Break Apart/2q11/CEN 6 Quadruple Color Probe (PL75) each onto individual samples

A gentle warming of the probe, as well as using a pipette tip which has been cut off to increase the size of the opening, can make the pipetting process easier. Avoid long exposure of the probe to light.

- 2.** Avoiding trapped bubbles, cover the samples with a coverslip (22 mm x 22 mm). Seal the coverslip, e.g. with a layer of hot glue from an adhesive pistol or with rubber cement

- 3.** Denature the slides at 75°C (\pm 2°C) for 10 min, e.g. on a hot plate

Depending upon the age of the sample and variations in the fixation stage, it may be necessary to optimize the denaturing temperature (73°C-77°C).

- 4.** Transfer the slide to a humidity chamber and hybridize overnight at 37°C (e.g. in a hybridization oven)

It is essential that the tissue/cell samples do not dry out during the hybridization step.

Further processing, such as washing and counter-staining, can be completed according to the user's needs. For a particularly user-friendly performance, we recommend the use of a *ZytoLight* FISH system by ZytoVision. These systems were also used for the confirmation of appropriateness of the ZytoLight SPEC CCND1 Break Apart/2q11/CEN 6 Quadruple Color Probe (PL75).

Results

With the use of appropriate filter sets, the hybridization signals of the labeled chromosomal region 11q13.2-q13.3 appear green and red; the hybridization signals of the labeled chromosome 2 and 6 specific sequences appear blue and golden, respectively. In interphases of normal cells or cells without aberrations of chromosomes 2, 6, and 11, two blue chromosome 2 signals, two golden chromosome 6 signals, and two green/red 11q13.2-q13.3 fusion signals appear. One 11q13.3 locus affected by a translocation is indicated by one separate green signal and one separate red signal.

In order to judge the specificity of the signals, every hybridization should be accompanied by controls. We recommend using at least one control sample in which the chromosome 2 and 6 copy number as well as 11q13.3 status is known.

Care should be taken not to evaluate overlapping cells, in order to avoid false results, e.g. an amplification of genes. Due to decondensed chromatin, single FISH signals can appear as small signal clusters. Thus, two or three signals of the same size, separated by a distance equal to or less than the diameter of one signal, should be counted as one signal.

Our experts are available to answer your questions.

Literature

Brunelli M, et al. (2005) *Modern Pathology* **18**: 161-9.

Iqbal MA, et al. (2000) *Diagn Cytopathol* **22**: 3-6.

Jhang JS, et al. (2004) *Cancer Genet Cytogenet* **149**: 114-9.

Kievits T, et al. (1990) *Cytogenet Cell Genet* **53**: 134-6.

Mertz KD, et al. (2006) *Urologe* **45**: 316-22.

Moch H. (2013) *Semin Cancer Biol* **23**: 3-9.

Sanjmyatav J, et al. (2012) *Eur Urol* **11**: e202.

Sukov WR, et al. (2009) *Hum Pathol* **40**: 1296-303.

Wilkinson DG: *In Situ Hybridization, A Practical Approach*, Oxford University Press (1992)
ISBN 0 19 963327 4.

As of: March 10, 2014 (5.1)

Trademarks:

ZytoVision® and ZytoLight® are trademarks of ZytoVision GmbH.



ZytoVision GmbH · Fischkai 1
D - 27572 Bremerhaven · Germany
Phone: +49 (0) 471/4832 - 300
Fax: +49 (0) 471/4832 - 509
www.zytovision.com
info@zytovision.com



Your local distributor