

*ZytoLight*  
SPEC 1p36/1q25 Dual Color Probe

**REF** Z-2075-200  $\nabla_{\Sigma}$  20 (0.2 ml)

**REF** Z-2075-50  $\nabla_{\Sigma}$  5 (0.05 ml)

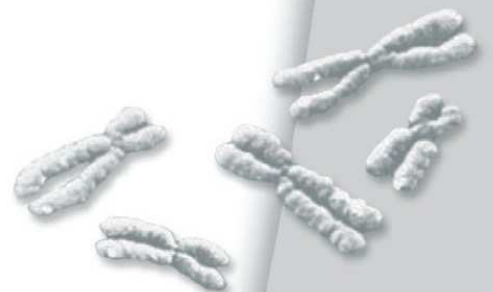
For the detection of human chromosome 1p36 and  
1q25 specific sequences by fluorescence *in situ*  
hybridization (FISH)



**IVD**

In vitro diagnostic medical device

according to EU directive 98/79/EC



**Fluorescence-labeled polynucleotide probe for the detection of  
human chromosome 1p36 and 1q25 specific sequences,  
ready to use**

## Product Description

- Content:** ZytoLight SPEC 1p36/1q25 Dual Color Probe (PL34) in hybridization buffer. The probe contains orange-labeled polynucleotides (ZyOrange: excitation at 547 nm and emission at 572 nm, similar to rhodamine), which target chromosome 1p36 specific sequences, and green-labeled polynucleotides (ZyGreen: excitation at 503 nm and emission at 528 nm, similar to FITC), which target chromosome 1q25 specific sequences.
- Product:** Z-2075-200: 0.2 ml (20 reactions of 10 µl each)  
Z-2075-50: 0.05 ml (5 reactions of 10 µl each)
- Specificity:** The ZytoLight SPEC 1p36/1q25 Dual Color Probe (PL34) is designed to be used for the detection of chromosome 1p36 and 1q25 specific sequences in formalin-fixed, paraffin-embedded tissue or cells by fluorescence *in situ* hybridization (FISH).
- Storage/Stability:** The ZytoLight SPEC 1p36/1q25 Dual Color Probe (PL34) must be stored at -16...-22°C in the dark (short-time storage at 2...8°C is possible) and is stable through the expiry date printed on the label.
- Use:** This product is designed for *in vitro* diagnostic use (according to EU directive 98/79/EC). Interpretation of results must be made within the context of the patient's clinical history with respect to further clinical and pathologic data of patient by a qualified pathologist!

**Safety Precautions:**

Read the operating instructions prior to use!

Do not use the reagents after the expiry date has been reached!

This product contains substances (in low concentrations and volumes) that are harmful to health. Avoid any direct contact with the reagents. Take appropriate protective measures (use disposable gloves, protective glasses, and lab garments)!

If reagents come into contact with skin, rinse skin immediately with copious quantities of water!

A material safety data sheet is available on request for the professional user!

## Principle of the Method

The presence of certain nucleic acid sequences in cells or tissue can be detected by *in situ* hybridization using labeled DNA probes. The hybridization results in duplex formation of sequences present in the test object with the labeled DNA probe.

Duplex formation (with sequences of the 1p36 and 1q25 regions in the test material) is directly detected by using the tags of fluorescence-labeled polynucleotides.

# Instructions

Pretreatment (dewaxing, proteolysis, post-fixation) should be carried out according to the needs of the user.

Denaturation and hybridization of probe:

- 1.** Pipette 10  $\mu$ l ZytoLight SPEC 1p36/1q25 Dual Color Probe (PL34) each onto individual samples

*A gentle warming of the probe, as well as using a pipette tip which has been cut off to increase the size of the opening, can make the pipetting process easier. Avoid long exposure of the probe to light.*

- 2.** Avoiding trapped bubbles, cover the samples with a coverslip (22 mm x 22 mm). Seal the coverslip, e.g. with a layer of hot glue from an adhesive pistol or with rubber cement

- 3.** Denature the slides at 75°C ( $\pm 2^\circ$ C) for 10 min, e.g. on a hot plate

*Depending upon the age of the sample and variations in the fixation stage, it may be necessary to optimize the denaturing temperature (73°C-77°C).*

- 4.** Transfer the slide to a humidity chamber and hybridize overnight at 37°C (e.g. in a hybridization oven)

*It is essential that the tissue/cell samples do not dry out during the hybridization step.*

Further processing, such as washing and counter-staining, can be completed according to the user's needs. For a particularly user-friendly performance, we recommend the use of a *ZytoLight* FISH system by ZytoVision. These systems were also used for the confirmation of appropriateness of the ZytoLight SPEC 1p36/1q25 Dual Color Probe (PL34).

## Results

With the use of appropriate filter sets, the hybridization signals of labeled 1p36 specific sequences appear orange; the hybridization signals of labeled 1q25 specific sequences appear green. In interphases of normal cells or cells without aberrations of chromosome 1, two 1p36 signals and two 1q25 signals appear. In cells with a deletion of the 1p36 locus, a different signal pattern is visible in interphases.

The polynucleotides contained in the ZytoLight SPEC 1p36/1q25 Dual Color Probe (PL34) which recognize the 1q25 chromosomal region function in themselves as an internal control that a successful hybridization has occurred, as well as proving the integrity of the cellular DNA.

In order to judge the specificity of the signals, every hybridization should be accompanied by controls. We recommend using at least one control sample in which the chromosome 1 copy number is known.

Care should be taken not to evaluate overlapping cells, in order to avoid false results, e.g. an amplification of genes. Due to decondensed chromatin, single FISH signals can appear as small signal clusters. Thus, two or three signals of the same size, separated by a distance equal to or less than the diameter of one signal, should be counted as one signal.

**Our experts are available to answer your questions.**

# Literature

- Barbashina V, et al. (2005) *Clin Cancer Res* **11**: 1119-28.
- Cairncross JG, et al. (1998) *J Natl Cancer Inst* **90**: 1473-9.
- Caron H, et al. (1996) *N Engl J Med* **334**: 225-30.
- Okawa ER, et al. (2008) *Oncogene* **27**: 803-10.
- Kievits T, et al. (1990) *Cytogenet Cell Genet* **53**: 134-6.
- Ragnarsson G, et al. (1999) *Br J Cancer* **79**: 1468-74.
- Reifenberger J, et al. (1994) *Am J Pathol* **145**: 1175-90.
- Smith JS, et al. (1999) *Oncogene* **18**: 4144-52.
- Smith JS, et al. (2000) *Genes Chromosomes Cancer* **29**: 16-25.
- White PS, et al. (2005) *Oncogene* **24**: 2684-94.
- Wilkinson DG: *In Situ Hybridization, A Practical Approach*, Oxford University Press (1992)  
ISBN 0 19 963327 4.

*As of: January 1, 2010 (4.5)*

## Trademarks:

ZytoVision® and ZytoLight® are trademarks of ZytoVision GmbH.



ZytoVision GmbH · Fischkai 1  
D - 27572 Bremerhaven · Germany  
Phone: +49 (0)471/4832 - 300  
Fax: +49 (0)471/4832 - 509  
[www.zytovision.com](http://www.zytovision.com)  
[info@zytovision.com](mailto:info@zytovision.com)



Your local distributor