

Cytology Pepsin Solution

REF ES-0002-4

▽ 40 (4 ml)

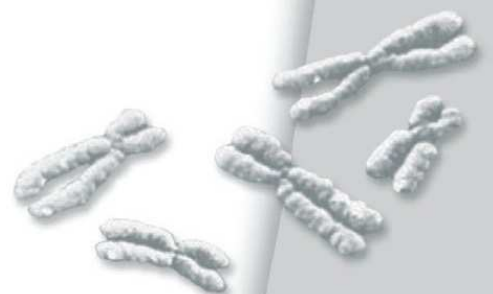
For use in *in situ* hybridization procedures on cytology specimens



IVD

In vitro diagnostic medical device

according to EU directive 98/79/EC



1. Scope of Application

This product is designed for *in vitro* diagnostic use (according to EU directive 98/79/EC). Interpretation of results must be made within the context of the patient's clinical history with respect to further clinical and pathologic data of patient by a qualified pathologist!

The Cytology Pepsin Solution (ES2) is designed to be used for proteolytic pretreatment of cytology specimens in *in situ* hybridization (ISH) protocols of ZytoVision.

2. Safety Precautions and Disposal

- ✓ Read the operating instructions prior to use!
- ✓ Do not use the reagents after the expiry date has been reached!
- ✓ Avoid any cross-contamination and micro-bacterial contamination of the reagents!
- ✓ Avoid any direct contact with the reagents. Take appropriate protective measures (use disposable gloves, protective glasses, and lab garments)!
- ✓ If reagents come into contact with skin, rinse skin immediately with copious quantities of water!
- ✓ Never pipet solutions with your mouth!
- ✓ The disposal of reagents must be carried out in accordance with local regulations!
- ✓ A material safety data sheet is available on request for the professional user!

3. The Cytology Pepsin Solution

The following components are included:

Code	Component	Quantity	Container
		Σ 40	
ES2	<u>Cytology Pepsin Solution</u>	4 ml	Dropper bottle, transparent cap (4 ml)
	Instruction manual	1	

Component **(ES2)** is sufficient for approx. 40 reactions.

4. Storage and Shelf Life

The component must be stored at 2...8°C **(ES2)**. If these storage conditions are followed, the component will function, without loss of performance, at least until the expiry date printed on the label.

5. Instructions

Cytology Pepsin Solution (ES2) is a ready-to-use solution in stabilizing buffer. After aging of the specimens by incubation overnight (12-16 h) at 37°C cover the cytology specimen with Cytology Pepsin Solution (ES2) and incubate at room temperature or 37°C in a humidity chamber.

Depending on multiple factors, e.g. nature and duration of fixing as well as nature of cells, different incubation times may be required. As a general rule, we recommend to ascertain the optimum time for proteolysis in pre-tests.

Stop incubation by washing in several changes of water or buffer.

Our experts are available to answer your questions.

As of: August 24, 2010 (4.5)

Trademarks:

ZytoVision® is a trademark of ZytoVision GmbH.



ZytoVision GmbH · Fischkai 1
D - 27572 Bremerhaven · Germany
Phone: +49 (0)471/4832 - 300
Fax: +49 (0)471/4832 - 509
www.zytovision.com
info@zytovision.com



Your local distributor