

*ZytoDot*  
AP-Red Solution Set

REF C-3038-100

100 (15.4 ml)

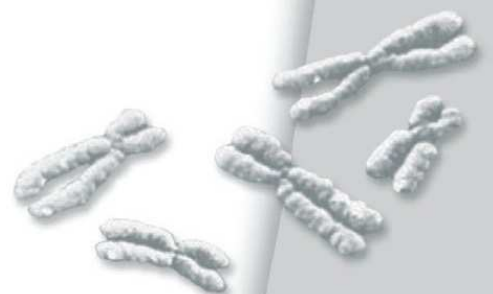
For use in chromogenic *in situ* hybridization (CISH)  
procedures



IVD

In vitro diagnostic medical device

according to EU directive 98/79/EC



## 1. Scope of Application

This product is designed for *in vitro* diagnostic use (according to EU directive 98/79/EC). Interpretation of results must be made within the context of the patient's clinical history with respect to further clinical and pathologic data of patient by a qualified pathologist!

The AP-Red Solution Set is designed to be used as a substrate for an AP-conjugated antibody in chromogenic *in situ* hybridization (CISH) applications following the protocols of the chromogenic *in situ* hybridization (CISH) systems of ZytoVision.

## 2. Safety Precautions and Disposal

- ✓ Read the operating instructions prior to use!
- ✓ Do not use the reagents after the expiry date has been reached!
- ✓ Avoid any cross-contamination and micro-bacterial contamination of the reagents!
- ✓ Avoid any direct contact with the reagents. Take appropriate protective measures (use disposable gloves, protective glasses, and lab garments)!
- ✓ If reagents come into contact with skin, rinse skin immediately with copious quantities of water!
- ✓ Never pipet solutions with your mouth!
- ✓ The disposal of reagents must be carried out in accordance with local regulations!
- ✓ A material safety data sheet is available on request for the professional user!

### 3. The AP-Red Solution

The following components are included:

Code	Component	Quantity	Container
SB6a	<u>AP-Red Solution A</u>	0.4 ml	Dropper bottle, red cap (small)
SB6b	<u>AP-Red Solution B</u>	15 ml	Dropper bottle, red cap
	Instruction manual	1	

Components (**SB6a-b**) are sufficient for 100 reactions.

### 4. Storage and Shelf Life

The components must be stored at 2...8°C. If these storage conditions are followed, the components will function, without loss of performance, at least until the expiry date printed on the label

## 5. Instructions

The AP-Red Solution Set is a two component system for detection steps in CISH applications, following the CISH protocols of ZytoVision.

*Preparation of AP-Red Solution:* Prior to immediate use, add one drop of AP-Red-Solution A (SB6a) in a graduated cup (e.g. AP-Red reaction vessel), fill up to 1 ml with AP-Red-Solution B (SB6b) and mix well. Do not expose to **strong** direct light.

Apply AP-Red Solution dropwise (3-4 drops per slide) to the slides and incubate for 10 min at RT in (protect from strong direct light). If required, the incubation time can be shortened or extended (7-15 min)



Use only xylene-based mounting solutions. Apply mounting solution immediately after dehydration series!



Do not exceed incubation times of 30 s per alcohol step (better: rinse carefully)!



Use fresh ethanol and xylene solutions; use only xylene of “pure” quality!

The final experimental results of a CISH experiment are strongly influenced by upstream and downstream experimental steps, i.e. tissue fixation, pretreatment, denaturation of DNA probe, hybridization, and detection. For a particularly user-friendly performance, we recommend the use of a CISH probe by ZytoVision. These probes and the CISH system of ZytoVision were used for the confirmation of appropriateness of the AP-Red Solution Set.

**Our experts are available to answer your questions.**

*As of: February 1, 2011 (5.0)*

**Trademarks:**

ZytoVision<sup>®</sup> and ZytoDot<sup>®</sup> are trademarks of ZytoVision GmbH.





ZytoVision GmbH · Fischkai 1  
D - 27572 Bremerhaven · Germany  
Phone: +49 (0)471/4832 - 300  
Fax: +49 (0)471/4832 - 509  
[www.zytovision.com](http://www.zytovision.com)  
[info@zytovision.com](mailto:info@zytovision.com)



Your local distributor