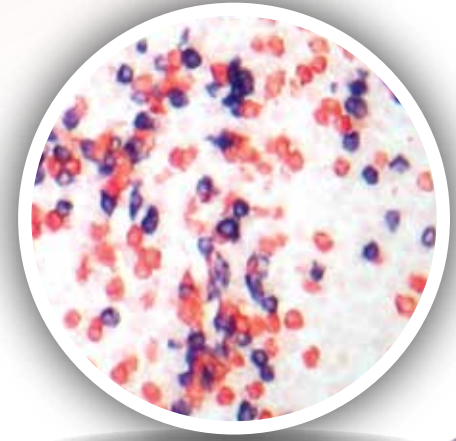
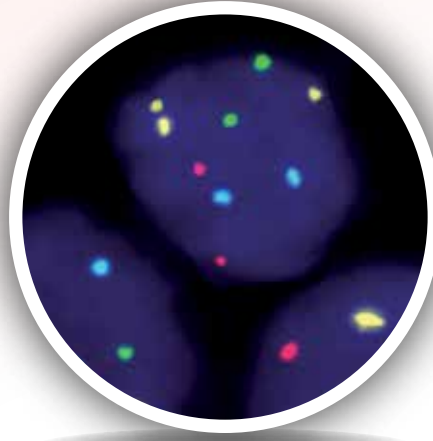
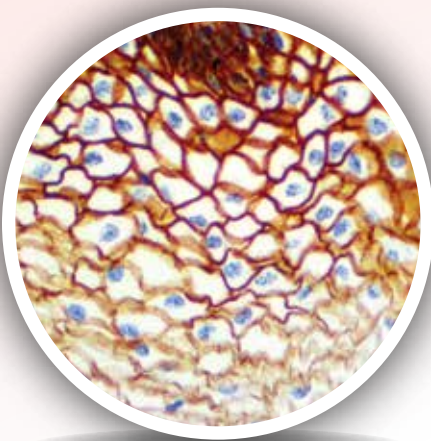


BIO SB TINTODETECTOR IMMUNODNA SYSTEM

Compact System for Molecular Pathology



*Perform Immunohistochemistry (IHC), Immunocytochemistry (ICC),
Immunofluorescence (IF) and In-situ Hybridization (ISH)
in one easy to use open platform.*

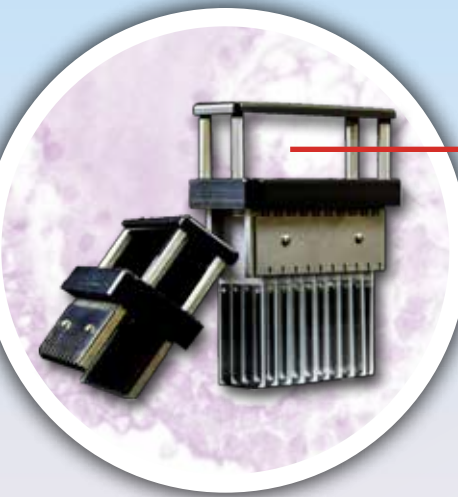
TintoDetector ImmunoDNA System

The Bio SB TintoDetector is a compact molecular pathology system which allows for the full implementation of immunohistochemical (IHC), Immunocytochemistry (ICC), Immunofluorescence (IF) and *in-situ* hybridization (ISH) protocols. Ideal for use in diagnostic or research laboratories looking for a cost-effective, semi-automated and open platform.

The Bio SB TintoDetector system consists of a durable stainless steel housing, eight solution dishes, incubator unit (for reagent incubation, nucleic acid denaturation, probe hybridization and stringency washes), and 30-well reagent holders. With a compact footprint, ease of use and versatility, the TintoDetector offers flexible protocol implementation at a competitive price.

TintoDetector Incubator

- Allows for implementation of a variety of IHC, ICC, IF and ISH protocols
- Incubator ensures rapid and consistent heat application of up to 110°C.
- 3 programmable temperature presets.
- Humidity chamber prevents evaporation of reagent.



TintoDetector Slide Handle

- Functions with TintoDetector Cap Gap Slides.
- Durable stainless steel construction.
- Holds 20 paired slides in one handle.
- Handle fits into incubator unit for easy implementation of Immunohistochemistry (IHC), Immunocytochemistry (ICC), Immunofluorescence (IF) and *In-situ* Hybridization (ISH) protocols.

TintoDetector Solution Dishes

- Store xylenes, buffers, counterstains, or other ancillaries.
- Hold up to eight 200 mL solutions which are easily and rapidly removed from unit.

30-Well Reagent Holders

- Storage of four 30-well reagent holders.
- Apply up to 200µl of reagent per well



Stainless Steel Workstation

- Stainless steel construction ensures durability.
- Small footprint for easy installation or relocation.

TintoDetector Accessories



TintoDetector Pads (BSB 7036)
Absorbent pads for use in reagent washes



30-Well Reagent Holders (BSB 7004)
Apply up to 200µl of reagent per well

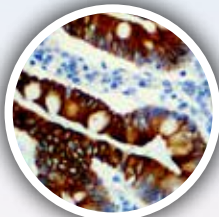


Bio SB TintoRetriever (BSB 7008)
Cost effective epitope retrieval

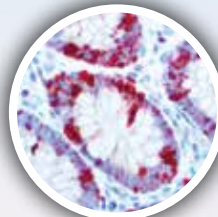
Product Description	Catalog #
TintoDetector Complete System (with Incubator)	BSB 7000
TintoDetector Staining System (without Incubator)	BSB 7001
TintoDetector Incubator	BSB 7002
TintoDetector Slide Holder for Cap Gap Slides	BSB 7003
TintoDetector 30-well Reagent Holder, Pack of 15	BSB 7004
TintoDetector Absorbent Pads, Box of 10	BSB 7036
TintoDetector Cap Gap Plus Slides, Box of 72	BSB 7006

IHC Immunohistochemistry

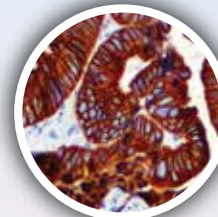
Utilize the TintoDetector in immunohistochemistry (IHC) applications to rapidly implement a protocol while minimizing reagent use (as little as 50 µl per slide). Bundle the TintoDetector with Bio SB Tinto Predilutes and detection systems to ensure standardized results at a competitive price.



HER-3 R Mab
Colon Carcinoma



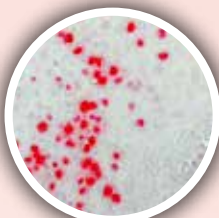
Ki-67 R Mab
Colon Tissue



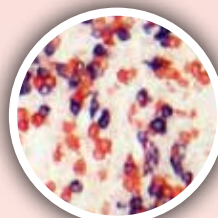
CK8 & CK18 R Mab
Colon Carcinoma

CISH Chromogenic *In-situ* Hybridization

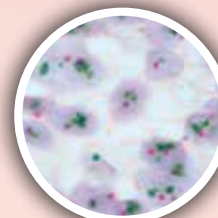
Use the TintoDetector and built-in incubator for CISH DNA/RNA denaturation, probe hybridization, stringency and detection. The TintoDetector is optimized to work with CISH kits that require rapid or overnight probe hybridization.



HPV Probe
Condyloma



Kappa-Lambda
B-cells



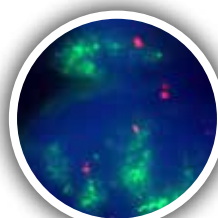
HER2/CEN17
Gastric Carcinoma

FISH Fluorescent *In-situ* Hybridization

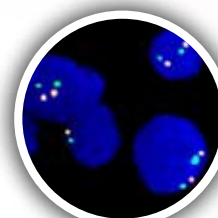
Use the TintoDetector for easy implementation of Fluorescent in-situ hybridization (FISH) technology into your clinical or research laboratory. The TintoDetector can be utilized with single, dual, triple, and quadruple color FISH probes.



ALK/EML4
Lung Carcinoma



MDM2/CEN12
Liposarcoma



MET/CEN17
Normal Cells

Bio SB Inc.

69 Santa Felicia Drive, Santa Barbara, CA 93117, USA

Tel (USA): 1-800-561-1145 | Tel (Int): +1-805-692-2768 | Fax: 805-6922769

E-mail: sales@biosb.com | Website: www.biosb.com