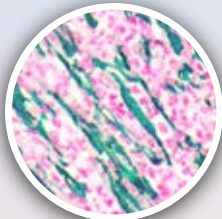


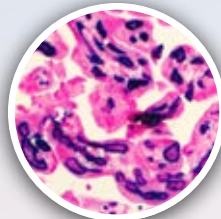
ANTIBODIES FOR VETERINARY AND RESEARCH APPLICATIONS



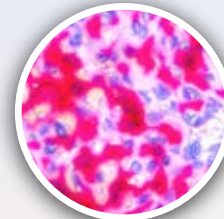
Although Bio SB tests all antibodies for use with FFPE Human tissues in immunohistochemical applications, certain antibodies have demonstrated cross reactivity with the species below. Contact Bio SB for additional details regarding species reactivity.



Actin S.M.



CD34 RMAb



CD10

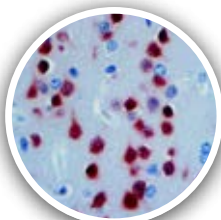
Antibody Name	Clone	Canine	Feline	Rat	Mouse	Horse	Rabbit	Chicken	Monkey	Sheep
A-1-Antitrypsin	Polyclonal					√			√	
Actin, Muscle Specific	HHF35	√	√	√	√		√	√	√	
Actin, Smooth Muscle	BSB-15	√	√	√	√		√			√
ALDH1A1, RMAb	EP168			√	√					
ALK, RMAb	EP302			√	√					
Androgen Receptor	BSB-4	√								
Annexin A1	BSB-95			√						
B7H3/CD276, RMAb	RBT-B7H3				√					
bcl-2 Rmab	EP36				√					
bcl6, RMAb	EP278			√	√					
Bcl-x RMAb	EP94			√	√					
Beta-Catenin	14	√		√	√			√		
Beta-Catenin, RMAb	EP35			√	√				√	√
C4d	Polyclonal			√	√					
c-Myc RMAb	EP121			√	√					
Cadherin-6, RMAb	EP217			√	√					
Calcitonin	Polyclonal	√	√							
Calponin	BSB-20	√	√							
Calretinin, RMAb	EP1798			√	√					
CD10	56C6	√	√							
CD10, RMAb	EP195			√						
CD11b, RMAb	EP45				√					
CD13, RMAb	EP117			√						
CD20	L26	√	√							
CD21 RMAb	EP64				√					
CD25	4C9				√					
CD31	1A10	√	√		√					
CD34	QEnd/10	√								
CD34 RMAb	EP88	√		√	√					√

Antibody Name	Clone	<i>Canine</i>	<i>Feline</i>	<i>Rat</i>	<i>Mouse</i>	<i>Horse</i>	<i>Rabbit</i>	<i>Chicken</i>	<i>Monkey</i>	<i>Sheep</i>
CD38	SPC32						√			
CD45RO	UHL-1			√	√				√	
CD57	BSB-10	√	√							
CD68	BSB-8			√	√		√			
CD68	KP1		√	√	√		√		√	
CD79a	JCB117	√	√							
CD105/Endoglin	Polyclonal				√					
CD117 RMAb	EP10								√	
CD138 RMAb	EP201			√	√					
CDX2 RMAb	EP25						√			
CEA Poly	Polyclonal	√	√							
Chromogranin A	LK2H10	√	√	√			√			
Collagen Type IV	CIV22	√		√		√				
COX-2 RMAb	RBT-COX2	√	√	√	√					
COX-2, RMAb	EP293				√					
CTLA-4/CD152	BSB-88	√		√	√	√				
Cyclin D1 RMAb	RBT14			√	√					
Cyclin D1 RMAb	EP 12			√	√					
Cytokeratin 5 RMAb	EP24				√					
Cytokeratin 7	OV-TL 12/30	√	√							
Cytokeratin 8 RMAb	EP17				√					
Cytokeratin 10 RMAb	EP97			√	√					
Cytokeratin 13 RMAb	EP69				√					
Cytokeratin 14	LL002			√						
Cytokeratin 15 RMAb	EP14				√					
Cytokeratin 17	BSB-33			√						
Cytokeratin 17 RMAb	EP98			√	√					
Cytokeratin 19 RMAb	EP72				√					
Cytokeratin 20	Ks20.8	√	√		√					
Cytokeratin 20 RMAb	EP23			√						
Cytokeratin HMW/34BE12	34BetaE12	√	√			√	√		√	
Cytokeratin Cocktail	AE1/AE3	√	√	√	√	√	√	√	√	
Cytokeratin LMW/AE1	AE1			√	√		√	√	√	
Cytokeratin OSCAR	OSCAR	√	√							
Desmin	D33	√	√	√	√			√		√
Desmin RMAb	EP15			√	√					
EGFR Phospho, RMAb	EP11				√					
ERCC1, RMAb	EP219				√					
ERG, RMAb	EP111			√	√					
Factor VIII-Related Antigen	Polyclonal	√	√							
FOXA1	Polyclonal				√					
FOXA1, RMAb	EP277			√	√					
FOXP1, RMAb	EP137			√	√					
Gastrin	Polyclonal	√	√							
GATA3	L50-823				√					

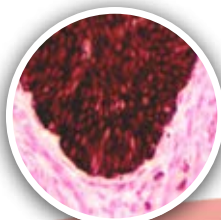
Antibody Name	Clone	<i>Canine</i>	<i>Feline</i>	<i>Rat</i>	<i>Mouse</i>	<i>Horse</i>	<i>Rabbit</i>	<i>Chicken</i>	<i>Monkey</i>	<i>Sheep</i>
GCDFP-15	23A3			√						
GFAP	G-A-5	√	√	√	√		√			
GFAP RMab	EP13			√						
Glucagon	Polyclonal	√		√	√	√				
Glucagon, RMab	EP74			√	√					
GLUT1, RMab	EP141			√	√					
Glutamine Synthetase	GS-6			√	√					
Glypican-3	1G12	√								
Hemoglobin A, RMab	EP124			√	√					
Hepatocyte Specific Antigen/Hep Par 1	OCH1E5	√	√							
HIF-1a, RMab	EP118			√	√					
HSP-27	G3.1	√		√	√				√	
IgG	BSB-40	√	√							
IMP-3, RMab	EP286			√	√					
Inhibin Alpha	R1	√	√							
Insulin	BSB-42	√	√	√						
Kappa Light Chains	BSB-58	√	√							
Lambda	BSB-16	√	√							
LH	BSB-53						√			
Lysozyme RMab	EP134				√					
Macrophage	HAM-56								√	
Mammaglobin RMab	EP249			√	√				√	
MART-1/Melan-A, A103	A103	√								
MCM3 RMab	EP202			√	√					
MDM2	BSB-64			√	√					
MDR-1 RMab	EP271	√	√	√	√	√	√		√	√
Melanoma Cocktail	HMB 45, A103, BSB-6	√								
Melanoma/PNL2	PNL2	√								
MiTF	C5/D5	√	√							
MLH1	G168-728			√	√					
MMP-9, RMab	EP127			√						
MSH6	44	√		√	√					
MSH6, RMab	EP49			√	√					
MUM1, RMab	EP190	√	√							
Myelin Basic Protein	Polyclonal	√								
Myeloperoxidase	Polyclonal	√	√							
Myogenin	F5D	√		√	√					
Myogenin, RMab	EP162			√	√					
Myoglobin	Polyclonal	√	√							
Myoglobin, RMab	EP87			√	√					
Myosin, Smooth Muscle Heavy Chain	BSB-17	√	√							
NeuN	A60			√	√			√		
Neurofilament	2F11	√		√	√	√				
NKX2.2, RMab	EP336			√	√					



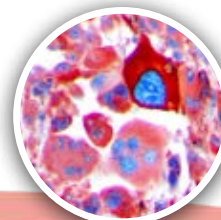
Antibody Name	Clone	<i>Canine</i>	<i>Feline</i>	<i>Rat</i>	<i>Mouse</i>	<i>Horse</i>	<i>Rabbit</i>	<i>Chicken</i>	<i>Monkey</i>	<i>Sheep</i>
OLIG-2, RMab	EP112				√					
Osteonectin/SPARC	BSB-93			√						
p53	D07		√			√			√	√
p63 (International Only)	EP174			√	√		√			
p120 Catenin, RMab	EP66			√	√					
PAX-5, RMab	RBT-PAX5				√					
PAX-6, RMab	EP341			√	√					
PAX-8	Polyclonal			√	√					
PDGFR-B, RMab	RBT-PDGFRB			√	√					
PLAP	BSB-47			√	√					
Podoplanin/D2-40	D2-40			√	√					
PTEN	6H2.1			√	√					
Renal Cell Carcinoma	PN-15			√						
S-100	4C4.9	√	√	√	√					
S100A1	EP184			√	√					
S100A8/MRP8	EP90				√					
S100Beta, RMab	EP32			√	√				√	
SALL4	6E3				√					
Somatostatin	Polyclonal	√				√				
SOX-2, RMab	EP103				√					
SOX-9, RMab	EP317			√	√					
SOX-10, RMab	EP268			√	√					
STAT6	Polyclonal	√		√	√	√				
Stathmin RMab	EP247			√	√					
Synaptophysin	Polyclonal	√	√							
Synaptophysin RMab	EP158			√	√					
Thyroglobulin	BSB-49		√							
Thyroglobulin	2H11/6E1	√	√							
TSH RMab	EP254						√			
TTF-1	8G7G3/1	√								
Vimentin	V9	√	√	√		√	√			
Vimentin RMab	EP21			√	√				√	



NeuN



Stathmin



S-100 Beta

Bio SB Inc.

69 Santa Felicia Drive, Santa Barbara, CA 93117, USA

Tel (USA): 1-800-561-1145 | Tel (Int): +1-805-692-2768 | Fax: 805-6922769

E-mail: info@biosb.com | Website: www.biosb.com